

GRIPPS®

ANSI/ISEA
121-2018
COMPLIANT

H02058 RETRACTABLE TAPE MEASURE LATCH

Designed specifically for use with the GRIPPS® Tape Measure Catch, the GRIPPS® Retractable Tape Measure Latch allows rapid tethering and holstering of tape measures.

Featuring a mounted quick-connect platform, it allows for effortless and secure attachment of the tape measure when not in use.

Includes a GRIPPS® Steel Retractor Unit.

2.5 KG **5.5** LB

MAX LOAD (D-RING)

0.7 KG **1.5** LB

MAX LOAD (RETRACTOR)



ENGINEERED FOR DROP PREVENTION

GRIPPS.COM

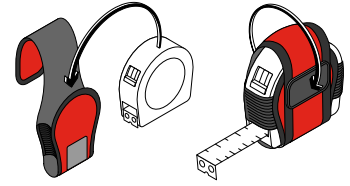
KEY FEATURES



SPECIFICATIONS

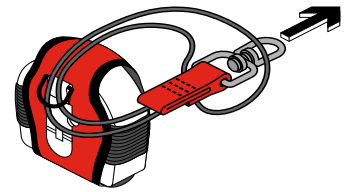
SKU	MAX LOAD (D-RING)	MAX LOAD (RETRACTOR)	MAX LENGTH (RETRACTOR)
H02058	2.5KG 5.5LB	0.7KG 1.5LB	1.2M 47IN

1



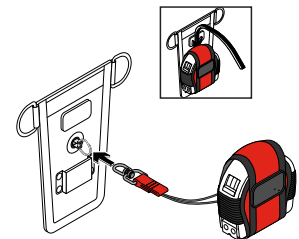
Place the tape measure into catch.

2



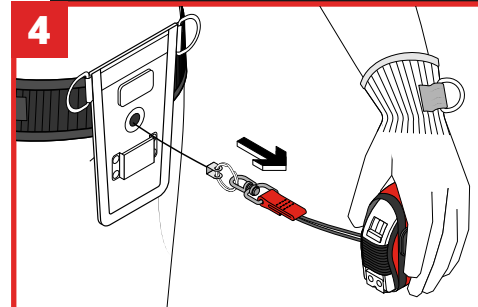
If using a GRIPPS® Swivel Catch, feed the cord through the D-ring on the back of the Tape Measure Catch. Then attach to the tool ring on the retractor unit.

3



The Tape Measure Catch can now slide onto the Tape Measure Latch.

4



Attach the holster to your work belt by the sliding belt through the rear straps of the Tape Measure Latch Holster.

@GRIPPSGLOBAL



#ConquerGravity