



Technical Specification Sheet

GRIPPS® GrippTie

SKU: H01008 | H01008-100



SKU:	H01008 H01008-100
Title:	GrippTie (5 Pack) GrippTie (100 Units)
ANSI/ISEA 121-2023 :	Yes, compliant.
Max Load:	2kg 4.4lb
Max Tether Length:	1.3mm 51in * For use with GRIPPS® tethers only.
Applicable Tool Diameter:	10mm to 40mm 0.4in to 1.6in
Unit Length:	265mm 10.43in
Unit Width:	40mm 1.57in
Unit Weight:	.016kg .035lb
Patent Protected:	Yes
Service Life:	12 Months

FOR PRODUCT SUPPORT CONTACT:

support@gripps.com | +61 3 8383 9458

www.gripps.com

SAFETY INFORMATION

⚠️ WARNING Before using the GRIPPS® GrippTie, read all provided safety information pertaining to the use of your Dropped Tool Prevention (DTP) device. FAILURE TO DO SO COULD RESULT IN INJURY OR DEATH.

The user of a DTP device bears the responsibility of reading all safety information contained herein. Keep this manual for future reference.

Intended Use:

When used properly, the GRIPPS® GrippTie can prevent workplace hazards resulting from dropped tools. These may include personal injury and material damage.

GRIPPS® does not approve use of this device for any activities not described in the User Instructions. This device is not intended to be used in any recreational activity, as a personal fall-arrest device or in any other manner not described herein.

⚠️ WARNING Misuse of this device could result in serious injury or death.

Adhere to all manufacturer recommendations regarding the operation and maintenance of this device. For additional information, contact GRIPPS® customer support.

Read and adhere to the following in order to ensure correct operational functionality:

- Your DTP should never be used as a personal fall-arrest device or restraint system.
- Do not use this device with tools that exceed the specified maximum load/weight.
- A DTP device used in applications that exceed the limits of operation specified by the manufacturer should be considered unsafe and should be replaced.
- Do not tether a tool over 2.5kg/5.5lbs directly to your clothing or person.
- Inspect your DTP device before each use.
- Ensure the DTP device is securely connected to a load rated tool connector or anchor point before use.
- Inspect any tool connector point before it is connected to the DTP device.
- Modification of the DTP device voids all warranties and violates manufacturer recommendations.
- Do not use a tool that cannot be connected to your DTP in the manner specified by GRIPPS®.
- It is unsafe to extend the length of the DTP product by any means.
- Do not use this product if it will create an unsafe working environment.
- Use extra precaution around moving machinery, moving parts, electrical hazards, extreme temperatures, chemical hazards, or combustion hazards.
- Avoid contact between any connected tethers and rough or sharp edges.
- Regularly inspect your tool in use & connected tethers to ensure they are free from any dust, grime or debris.

- All connected tools and equipment, including connection points, must be compatible for use with this DTP device.
- Always wear appropriate personal protective equipment.
- If a tether has arrested a dropped tool or object, it should be taken out of service and replaced.
- All procedures shown in this instruction are for GRIPPS® GrippTie.

GENERAL USE AND CARE

The GRIPPS® GrippTie is a versatile and durable tool connector, certified to ANSI/ISEA 121-2023 and can be attached to a vast array of hand tools rapidly.

Before Use:

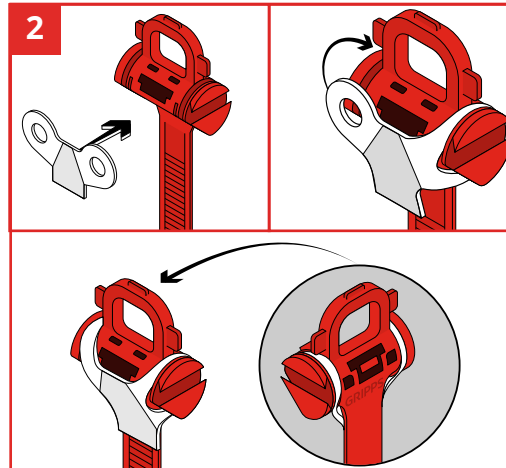
Thoroughly inspect your GRIPPS® DTP device before each use. Do not use any component that presents deformities or deterioration. **The service life of a GrippTie is 12 months.**

HOW TO USE/INSTRUCTIONS

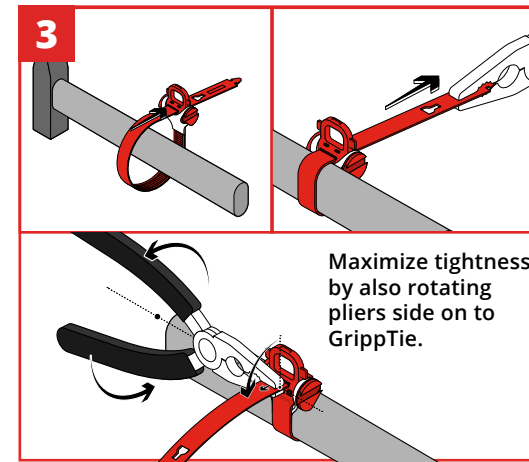
1 The GrippTie is suitable for tools:

1. Up to 2kg (4.4lb) and for use with GRIPPS® tethers up to 1.3m / (51") tether length.
2. For tools with a diameter between 10mm (0.4") and 40mm (1.6").

Ensure the tool is clean and dry before applying the GrippTie.



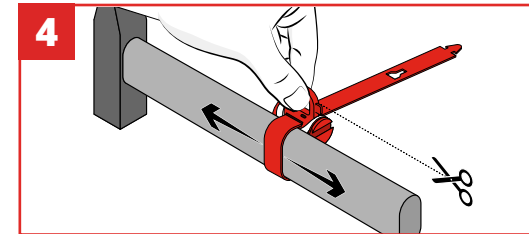
Assemble the two parts together. Loop the "Wings" over each side.



Maximize tightness by also rotating pliers side on to GrippTie.

Wrap the GrippTie around the tool, the logo and text should be visible on the outside. Feed the strap through and pull the tag end until the GrippTie is firmly in contact with the tool, this will require a pair of pliers.

Do not use on tapering surfaces of a tool.



Check that the GrippTie is sufficiently tightened. Pull by hand in each direction. It should not move. Then snip off the tag end. Take care not to make any sharp edges.

Ensure the GrippTie cannot move and has full contact the whole way around the tool.

After Use Care:

Clean and inspect the GrippTie and any connected tethers. For tougher stains, use warm water and a mild soap or detergent. Do not use again until dry.

Store in a clean and dry environment. Proper care will help to ensure that it will operate effectively and extend its service.

GRIPPS®

