

GRIPPS®

ANSI/ISEA
121-2023
COMPLIANT

H01008 GRIPPTIE

2_{KG}

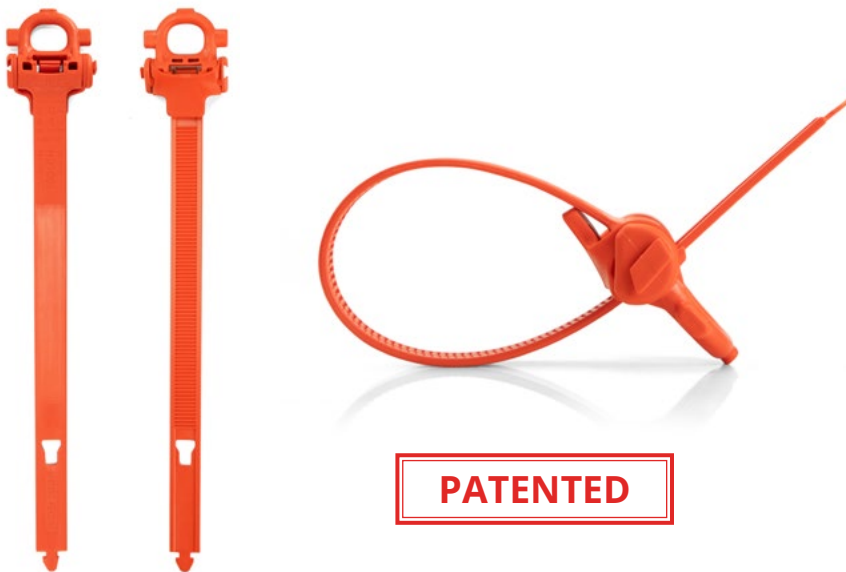
4.4_{LB}

MAX LOAD:

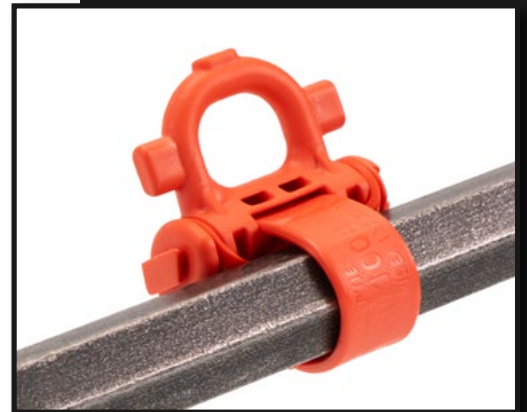
The GRIPPS® GrippTie is a versatile, durable, and cost-effective tool connector that presents a breakthrough in tool tethering technology. The GrippTie is fully certified to ANSI/ISEA 121-2023 and can be attached to a vast array of hand tools rapidly and without the need for any secondary components or specialised equipment.

Purpose-built for speed and efficiency, it dramatically cuts down application time compared to traditional methods, making tool tethering faster and more convenient than ever.

GRIPPS® groundbreaking GrippTie is perfect for height workers who need a rapid and adaptable solution for tool tethering. With a 2kg/4.4lb load rating, the GRIPPS® GrippTie delivers unmatched speed and convenience, setting a new standard in drop prevention.



PATENTED



ENGINEERED FOR DROP PREVENTION

www.gripps.com

KEY FEATURES

ANSI/ISEA 121-2023 compliant.

Highly versatile and adaptable to a wide range of tools.

Extremely fast to apply (only requiring a pair of pliers).

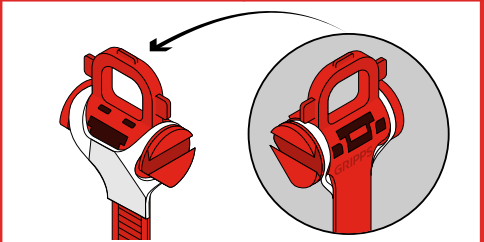
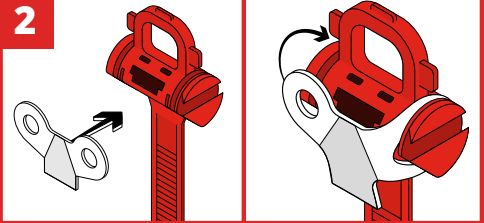
Maximum load rating of 2kg/4.4lb.



1

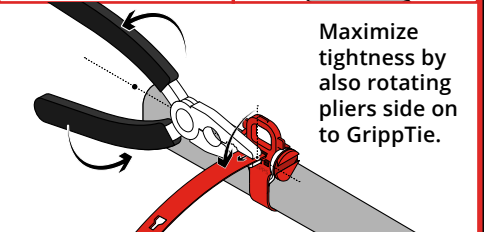
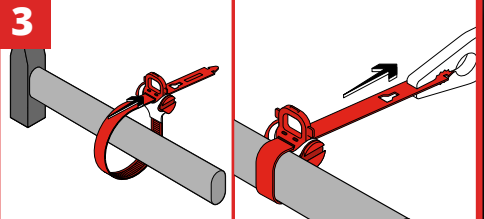
The GrippTie is suitable for tools:
 1. Up to 2kg (4.4lb) and for use with GRIPPS® tethers up to 1.3m / (51") tether length.
 2. For tools with a diameter between 10mm (0.4") and 40mm (1.6").
 Ensure the tool is clean and dry before applying the GrippTie.

2



Assemble the two parts together. Loop the "Wings" over each side.

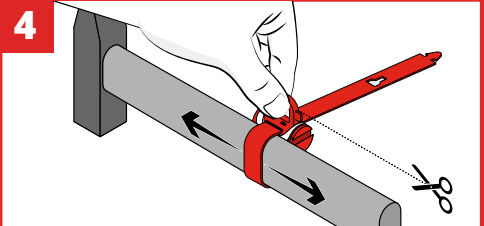
3



Maximize tightness by also rotating pliers side on to GrippTie.

Wrap the GrippTie around the tool. Feed the strap through and pull the tag end until the GrippTie is firmly in contact with the tool, this will require a pair of pliers. **Do not use on tapering surfaces of a tool.**

4



Check that the GrippTie is sufficiently tightened. Pull by hand in each direction. It should not move. Then snip off the tag end. Take care not to make any sharp edges.

Ensure the GrippTie cannot move and has full contact the whole way around the tool.

SPECIFICATIONS

SKU	QTY	MAX LOAD	LENGTH	WIDTH
H01008	5	2kg 4.4lb	265mm 10.43in	40MM 1.57in

MAX TETHER LENGTH	APPLICABLE TOOL DIAMETER	WEIGHT
1.3m 51in <i>For use with GRIPPS® tethers only.</i>	10mm to 40mm 0.4in to 1.6in	Gross: 0.1kg 0.22lb Net: 0.08kg 0.18lb