



AN203, AN235, AN245

Energy Absorbing Lanyards

USER INSTRUCTION

Figure 1

PRODUCT CODE	HARNES CONNECTOR	ANCHOR CONNECTOR	SINGLE OR TWIN	LEG MATERIAL	WEIGHT (kg)
WAUAN203200NN	Karabiner	Karabiner	Single	Web	0.85
WAUAN235200NN	Karabiner	Karabiner	Single	Elastic	0.80
WAUAN235200JJ	Snap Hook	Snap Hook	Single	Elastic	1.10
WAUAN235200JW	Snap Hook	Rebar Hook	Single	Elastic	1.55
WAUAN245200JWW	Snap Hook	Rebar Hook	Twin	Elastic	2.40



WAUAN203200NN



WAUAN235200NN



WAUAN235200JJ



WAUAN235200JW



WAUAN245200JWW

1 Specification

1.1 Description

This Lanyard is suitable for use as a complete personal fall protection system. The Lanyard provides a connection between the users harness and an anchor. See AS/NZS 1891.4 for selection use and maintenance of suitable fall protection equipment.

1.2 Standard

The Lanyards listed on the front of this manual are certified to AS1891.5:2020.

1.3 Anchorage

When selecting an anchorage for use with the Lanyard, consider the local standards and regulations. The anchorage selected shall be capable of sustaining a force of 15kN (3372lb) for fall arrest and be mounted above the area of work to limit free fall and swing fall.

1.4 Material Specification

	COMPONENT	DESCRIPTION
1	Webbing	Polyester
2	Thread	Polyester
3	Hardware	High Tensile Steel, Zinc plated
4	Label	Vinyl

2 Limitations of Use

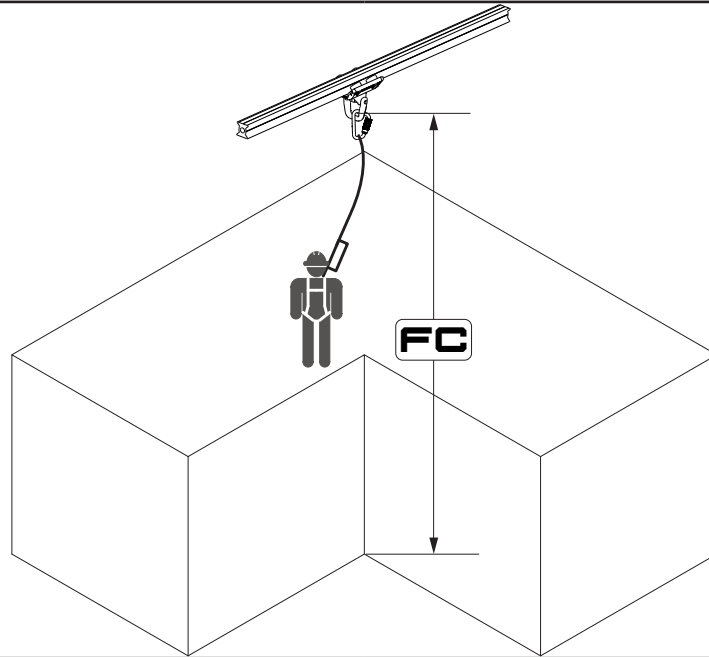
2.1 Fall Clearance

When planning your fall protection system, it is important to accurately assess all components of your system in order to avoid injury. Figure 2 provides guidance on how to calculate fall clearance. When assessing fall clearance the user should take into account; distance from the anchor point, slack in the fall protection system, extension of any energy absorbers and slide of the harness. A suitable safety factor should be added to the users calculation to further reduce the risk of injury (see AS/NZS1891.4).

⚠ Always consult the instruction provided by the manufacturer of each component of your fall arrest system to accurately assess Fall Clearance.

⚠ Free-fall shall never exceed 2m.

Figure 2



	Lanyard User Capacity - Including clothing and tools	Minimum fall clearance required below anchor point
MINIMUM RATED LOAD	50kg	5.4m
MAXIMUM RATED LOAD	150kg	6.6m

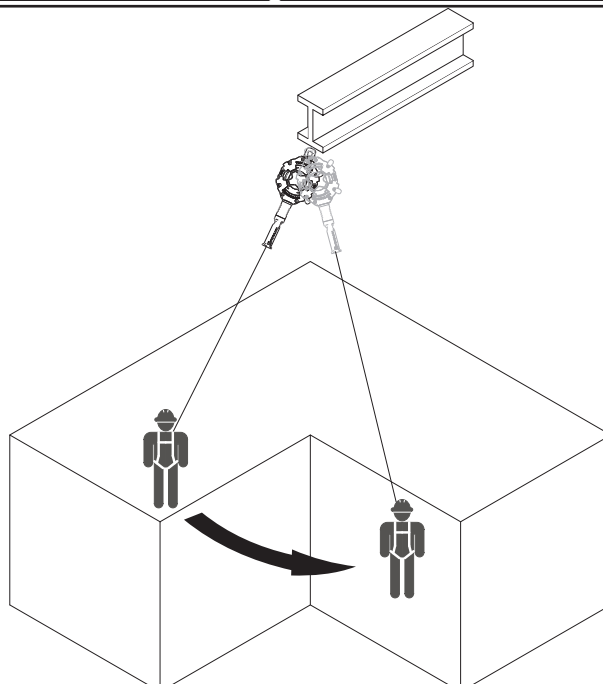
As per AS1891.5, Figure 2 shows the maximum fall clearance for the Lanyard . The distance in Figure 2 includes the 1m safety factor as per AS/NZS 1891.4.

2.2 Swing Fall

Working at a distance from the anchor point or off centre of a horizontal line or rail may cause a swing fall. See Figure 3. Fall protection systems shall be setup in such a way to limit swing fall.

⚠ The force of striking an object during a swing fall may result in serious injury or death.

Figure 3



2.3 Hazards

Use of this equipment in the presence of hazards may cause damage to the equipment and/or result in the function of the equipment being impeded. These hazards include but are not limited to; extreme temperature, sharp edges, chemical reagents, electrical conductivity, abrasion, cutting, climatic exposure and rotating or moving machinery. Contact SafetyLink for additional information.

2.4 Training

It is essential that all users are trained in the proper inspection, setup and use of this equipment. It's the responsibility of the user to ensure they are trained and deemed competent in the correct use of this equipment and understand the limitations of its use.

⚠ *Incorrect use of this equipment may result in serious injury or death.*

2.5 Rescue

It is the responsibility of the user of this equipment and their employer to have a suitable rescue plan and the ability to implement it at any time during setup and use of this equipment.

3 Connections

3.1 Making Connection

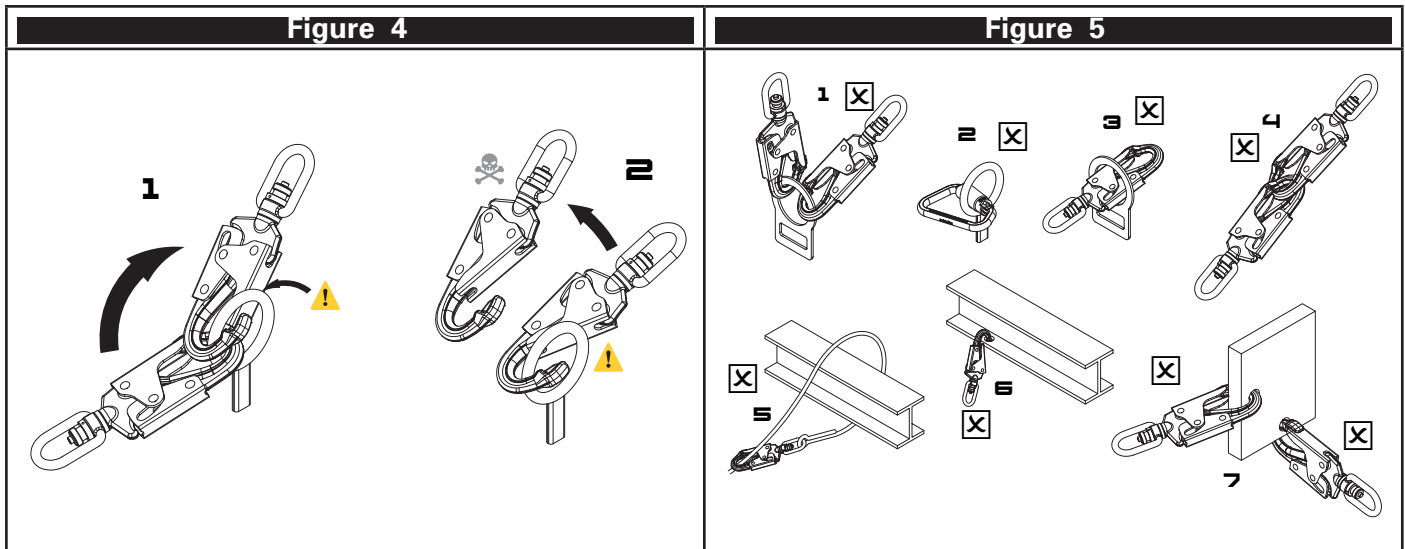
Only make compatible connections. Always ensure connectors close and lock correctly before use. Below and Figure 5 are examples of unsuitable connections;

- 1 To an anchor or D-ring which has another connector attached.
- 2 In a position that will apply load to the gate mechanism.
- 3 By passing the connection through the attachment.
- 4 Connecting a connector to another connector.
- 5 Around a structure and back to the lifeline.
- 6 To an attachment that will limit the function of the gate.
- 7 To a location that will not load the connector as designed.

3.2 Compatibility of Connections

Connections made to and with this equipment shall be compatible. Connector shall be compatible shape, size and equivalent rating in order to ensure a compatible connection is made. Incompatible connections may cause loading of the gate mechanism leading to unintentional disengagement. See Figure 4.

⚠ *Making incompatible or unsuitable connection may result in unintentional disengagement of the connector resulting in serious injury or death.*



4 Use

4.1 Planning

Before starting work, plan your working at heights and rescue systems by accounting for all hazards present in the work place and allowing for the available fall clearance. Ensure all users are fit, healthy and capable of safely operating this equipment as well as implementing the rescue plan. Consult AS/NZS 1891.4 for selection, use, maintenance and training requirements.

4.2 Anchorage Selection

The anchor selected shall be capable of sustaining the loads outlined in Section 1.3. The anchor selected shall be as close to directly over the work location as possible to limit swing fall and reduce the required fall clearance.

4.3 Lanyard Use

- 1 Connect the Lanyard to the Full Body Harness with the energy absorber end connected directly to the user harness.
- 2 Connect the other end of the Lanyard to a suitable anchor.

⚠ Do not connect the Lanyard to any location on the Full Body Harness other than the sternal and dorsal attachment points.

⚠ Do not wrap the Lanyard around an object and connect back to the Lanyard to form a connection to the object.

⚠ Do not tie knots in the Lanyard.

⚠ Do not use the Lanyard in a scenario where the web or energy absorber may be exposed to a sharp edge, or where a fall may occur over an edge. Doing so may result in serious injury or death.

⚠ The User Capacity of the Lanyard is defined as the mass of the user plus their clothing, PPE, tools and other equipment.

⚠ For Twin leg Lanyards, never connect an unused leg of a lanyard to an attachment point on the harness.

5 Storage, Transport and Maintenance

5.1 Storage and Transport

This equipment shall be stored and transported in a cool, dry environment, away from any hazards and out of direct sunlight.

5.2 Maintenance

The Lanyard is not serviceable. Once the item fails inspection, is involved in a fall or if the remove from service date is reached (10 years from date of manufacturer for AS 1891.5 products) it shall be removed from service and destroyed to prevent use.

⚠ Do not attempt to modify or disassemble this product

5.3 Cleaning

The Lanyard may be cleaned by the end user periodically to increase service life. After cleaning, the product shall undergo the pre-use inspection.

Hardware can be cleaned with a rag and warm water to remove dirt and grit. A mild detergent may be used to assist cleaning.

Spot clean the web with a damp cloth with mild detergent to remove dirt and grit. Once clean, allow the web to dry out of direct sunlight before returning to storage.

⚠ Do not store this product when wet. Allow the product to dry and conduct a pre-use inspection prior to returning the item to service.

⚠ Do not tumble dry.

⚠ Do not submerge or wet the energy absorber of the Rope Line as it will not dry correctly.

6 Inspection

6.1 Before and After Use

The Lanyard shall be inspected before and after each use by the user.





6.2 Competent Person

A competent person shall inspect the product at least every 6 months.

6.3 Inspection Procedure and Record

INSPECTION RECORD			
Product Code		Date of Manufacture	
Serial or Batch No.		Date of First Use	
Inspector		Date of Inspection	
PROCEDURE	INSPECTION	USER	COMPETENT PERSON
LABELS	Inspect the labels are present and legible as per Figure 6.	<input type="checkbox"/>	<input type="checkbox"/>
	Comments:		
WEBBING	Inspect the web for abrasion, broken fibres, discolouration, foreign material (dirt, grit, grease, weld spatter etc.) burns.	<input type="checkbox"/>	<input type="checkbox"/>
	Comments:		
HARDWARE	Inspect the hardware for rust, wear, abrasion, bends, deformation, cracks or breaks.	<input type="checkbox"/>	<input type="checkbox"/>
	Comments:		
STITCHING	Inspect all stitch patterns are complete and free from broken thread, abrasion, dirt and grit.	<input type="checkbox"/>	<input type="checkbox"/>
	Comments:		
ENERGY ABSORBER	Inspect energy absorber is free from broken thread, abrasion, dirt and grit. Inspect for any signs of deployment, activation or overloading.	<input type="checkbox"/>	<input type="checkbox"/>
	Comments:		

Figure 6

Energy Absorbing Lanyard			 <p>PRODUCT CERTIFICATION BSI Certified Product AUSTRALIA & NZ STANDARDS</p>
	Part No.: XXXXXXXXXXXX Serial No: XXXX Batch No: XXXXXXXXX Manufacture Date: dd/mm/yyyy Remove from Service: dd/mm/yyyy The maximum allowable free fall is 2m. Only competent users should use this equipment.		
			

Warranties

EXTRACT: SAFETYLINK PTY LTD STANDARD TERMS AND CONDITIONS

- 6.4 To the extent permitted by law all implied conditions, warranties and undertakings are expressly excluded.
- 6.5 Except as provided in this clause the Company shall not be liable for any loss or damage, whether direct or indirect (including consequential losses or damage) arising out of any breach of contract by the Company or any negligence of the Company, its employees or agents.
- 6.6 Should the Company be liable for a breach of a guarantee, condition or warranty implied by the Australian Consumer Law (not being a guarantee, condition or warranty implied by sections 51, 52 and 53 of that Law) then its liability for a breach of any such condition or warranty express or implied shall be limited, at its option, to any one or more of the following.
- A in case of Goods
- I the replacement of the Goods or the supply of equivalent Goods.
 - II the repair of the goods,
 - III the payment of the cost of replacing the Goods or acquiring equivalent Goods.
 - IV the payment of the cost of having the Goods repaired. Provided that any such Goods are returned to the Company by the Purchaser at the Purchaser's expense.
- B in the case of services
- I the supply of the services again,
 - II the payment of the cost of having the services supplied again.
- 6.7 The Company is not liable for the costs of recovery of the Goods from the field, loss of use of the Goods, loss of time, inconvenience, incidental or consequential loss or damage, nor for any other loss or damage other than as stated above, whether ordinary or exemplary, caused either directly or indirectly by use of the Goods.
- 6.8 The Company warrants that at the time of shipment, Products manufactured by it will be free from defects in material and workmanship. In the absence of a modified written warranty, the Company agrees to making good any such defects by repairing the same or at the Company's option by replacement, for a period of (1) one year from the date of shipment. This limited warranty applies provided that:
- a defects have arising solely from faulty materials or workmanship;
 - b the Products have not received maltreatment, inattention or interference;
 - c the Products have been installed in accordance with the Company's Installation Handbooks using only products supplied by the Company;
 - d accessories used with the Products are manufactured by or approved by the Company
 - e the Products are maintained in accordance with Australian Standard 1891.4 (section 9).
 - f you notify any claim under this warranty to SafetyLink in writing to the address below no later than 14 days after the event or occurrence concerning the produce giving rise to the claim and you pay all costs related to your claim.
- This warranty does not apply to any defects or other malfunctions caused to the Goods by accident, neglect, vandalism, misuse, alteration, modification or unusual physical, environment or electrical stress.
- Please note that the benefits to the purchaser (as a consumer) given by this warranty are in addition to your other rights and remedies under the Australian Consumer Law. Our goods come with guarantees that cannot be excluded under the Australian Consumer Law. You are entitled to a replacement or refund for a major failure and compensation for any other reasonably foreseeable loss or damage. You are also entitled to have the goods repaired or replaced if the goods fail to be of acceptable quality and the failure does not amount to a major failure.
- 6.9 If any goods are not manufactured by the Company, the guarantee of the manufacturer thereof shall be accepted by the Purchaser as the only express warranty given in respect of the goods.
- 6.10 Except as provided in this clause 11, all express and implied warranties, guarantees and conditions under statute or general law as the merchantability, description, quality, suitability or fitness of the Products for any purpose or as to design, assembly, installation, materials or workmanship or otherwise are hereby expressly excluded (to the extent to which they may be excluded by law).

PLEASE SEE SAFETYLINK PTY LTD FULL STANDARD TERMS OF CONDITIONS OF SALE FOR FURTHER REFERENCE.



SafetyLink Pty Ltd | ABN 83 081 777 371 | www.safetylink.com

Head Office: 54 Bonville Ave, Thornton, 2322, NSW, Australia

+64 2 4964 1068 | 1300 789 545

Asia-Pacific/The Americas | info@safetylink.com

Europe/Africa/Middle East | europe.sales@safetylink.com

Northern Europe | uk.sales@safetylink.com