



SpanSet Australia Ltd

150 Old Bathurst Road
Emu Plains
NSW 2750
Australia

Telephone

+61 2 4735 3955

Fax

+61 2 4735 3630

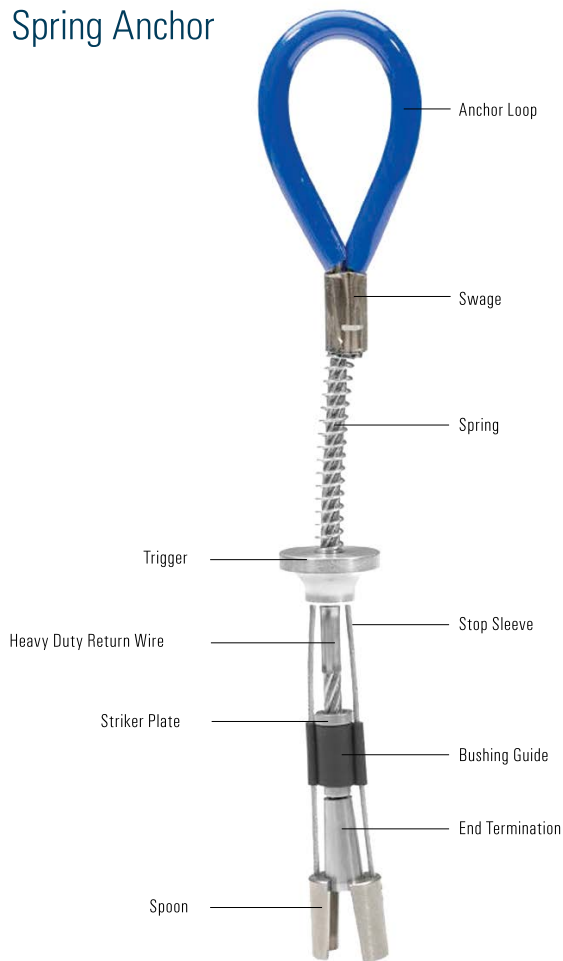
Email

sales@spanset.com.au

Internet

www.spanset.com.au

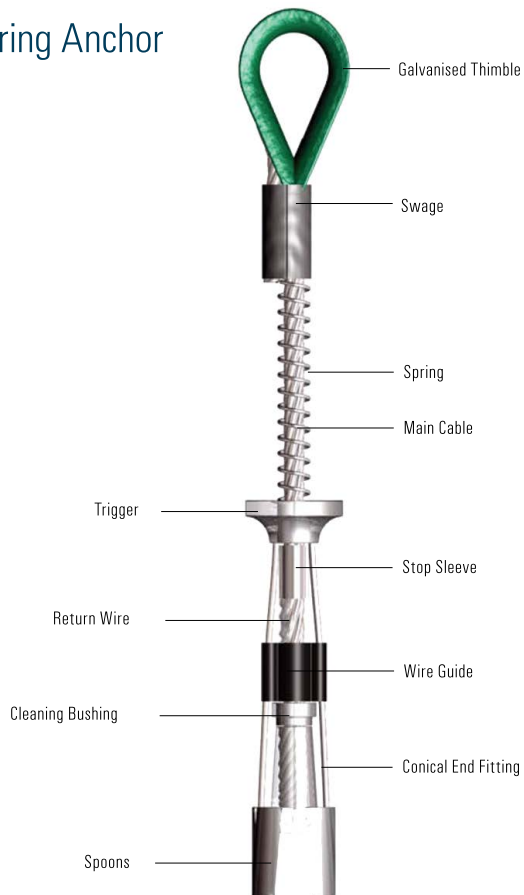
CT01 Spring Anchor



Technical Information

Maximum Capacity	22kN
Type	Temporary Concrete
Main Cable	7x19 Aircraft Cable
End Termination	304 Stainless Steel
Spoons	304 Stainless Steel
Bushing Guide	304 Stainless Steel
Stop Sleeve	304 Stainless Steel
Trigger	6061 T-6 Aluminum
Spring	Zinc Coated Spring Steel
Swage	Zinc Coated Copper
Return Wire	1x19 Aircraft Cable
Plastics	Blue Polyurethane

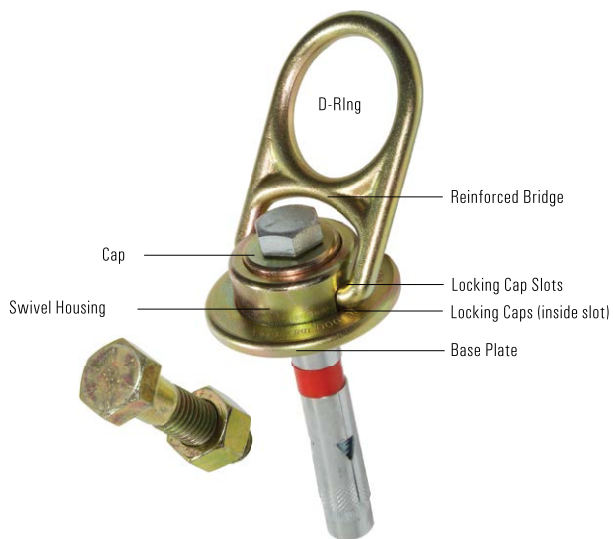
CT02 Spring Anchor



Technical Information

Maximum Capacity	44kN
Type	Temporary Concrete
Main Cable	7x19 Aircraft Cable
Rotary Swage	304 Stainless Steel
Spoons	304 Stainless Steel
Cleaning Bushing	304 Stainless Steel
Stop Sleeve	304 Stainless Steel
Trigger	6061 T-6 Aluminum
Spring	Zinc Coated Spring Steel
Swage	Zinc Coated Copper
Return Wire	1x19 Galvanised Cable
Thimble	Green Polyurethane

CT04 Swivel Anchor



Technical Information

Maximum Capacity	44kN
Maximum Working Load	907kg
Maximum Breaking Strength	4536kg
Type	Temporary Concrete
Construction	Zinc Plated Forged Heat Treated Steel Alloy
Rotation	360°
Flip	180°
Persons	4

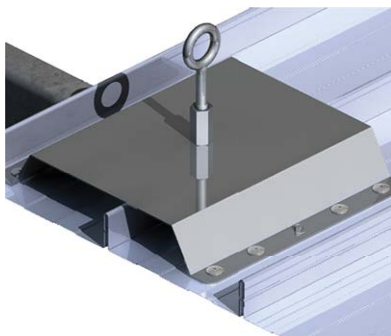
RA1 Retrofit Purlin



Technical Information

Use	Retrofits to profile of roof sheeting
Maximum Capacity	22kN
Standard	Tested to Standard AS/NZS1891.4
Construction	Stainless Steel
Abseil Use	Yes

SM1P Steel Sheet Anchor



Technical Information

Use	Universal Top Mount Kit Top Hat Plate
Maximum Capacity	22kN
Weight	1.68kg
Abseil Use	No

TA1 Timber Rafter Anchor



Technical Information

Use	Timber Mount Anchor Kit
Construction	Stainless Steel/Tiletite Flashing
Maximum Capacity	22kN
Weight	1.99kg
Abseil Use	No

Training Courses

Height Safety

Working Safely at Height
Working Safely at Heights Refresher
Height Safety Supervisor*
Height Safety Manager*

Rescue

Rescue Systems Operator*
Vertical Rescue*
Tower and Pole Rescue*
Wind Access Rescue Technician*
EWP Emergency Escape
Gotcha Rescue

Confined Space

Confined Space*
Confined Space - Refresher*
Breathing Apparatus*
Confined Space Non-Entry Rescue*

Inspection

Competent Person Practical
Inspection and Record Keeping*



SpanSet Accreditations

ISO 9001:2015 Certified Quality
Management System

ISO 14001:2015 Certified Environment
Management System

OHSAS 18001:2007 Certified Occupational
Health and Safety Management Systems

Australian/New Zealand Standard
4801:2001 certified Occupational Health
and Safety Management Systems

Accredited for compliance with ISO/IEC
17025 - Testing

ASQA Registered Training Organisation
certified to ISO 9001:2008

Certified manufacturer to AS/NZS 1891.1
"Industrial Fall Arrest Systems and Devices"

Certified manufacturer to AS/NZS 1353.1
"Flat Synthetic Webbing Slings"

Certified manufacturer to AS/NZS 4497
"Round Slings—Synthetic Fibre"

www.spanset.com.au

