

CONFINED SPACE

Davits Overview

DAVITS OVERVIEW

The PRO Series Davits are available in a wide variety of heights and offset reaches to suit numerous confined space, fall arrest and rescue applications. Many of the PRO Series Davits have the ability to rotate a full 360 degrees in either a portable or fixed base making ease of access and egress out of work environments stress-free. PRO Series Davits are ideal equipment for applications in various work environments. PRO Series Davits are modular in construction therefore making individual components exceptionally lightweight and easy to transport and assemble.



CONFINED SPACE



PRO-2G Davits

PRO-2G DAVITS



WORLD RECOGNISED ACCREDITATION No. 18940



FS603922

The BTS PRO-2G Davit is a portable davit arm that can be used with a Self Retracting Lifeline (SRL) to provide fall protection. Can also be used as an abseil (rope access) diversion anchor. Height 2.10m (6.88 ft) Offset reach 1.20m (3.93 ft).

PRODUCT FEATURES

- Rotates full 360 degrees.
- Man & Material Rated to 140Kg (310 lbs).
- Offset reach 1.20m (3.93 ft).
- Compatible with permanent davit bases.
- Stand-by person anchor point via winch interface bracket.

Specifications

| | | |
|------------------------------------|---|---------------------------|
| Ultimate Strength Rating: | Jib: 15kN (3372 lbs). | Bracket: 15kN (3372 lbs). |
| Capacity: Maximum number of users: | Max. 2 users, 1 person no more than 140Kg (310 lbs) per anchor point. | |
| Allowable MAF/AAF for SRL/SRD: | 6kN (1350 lbs). | |



50015

HRA-12TA / HRA-18TA / HRA-24TA



60174



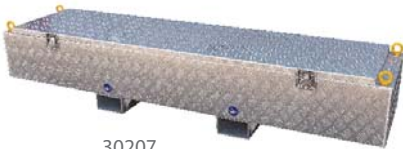
60202UIM-SP



60217



SSJC-C820



30207

| PRO-2G DAVITS | | | |
|---|--------------|---------------|-------|
| Model Description | Reach m (ft) | Height m (ft) | Code |
| PRO-2G Analogue Series Davit c/w Winch Interface Bracket. | 1.20 (3.93) | 2.10 (6.88) | 50015 |

| PRO-2G DAVITS ACCESSORIES | |
|--|------------------------------|
| Model Description | Code |
| Winch Interface Bracket c/w Pins & lanyard for Analogue Davit 50015/50048 | 60174 |
| IKAR Rescue winch Bracket without Female Single Interface Brackets. | 60202UIM-SP |
| S/S Material Winch c/w Female Interface Bracket with 18m x 6mm (59' x 1/4") HDG W/R with G80 Swivel S/L HK. | SSJC-C820 |
| BTECH Man / Materials Rated Winch with 18, 30, 45, 60, 76 & 90 m (59, 98, 147, 196, 249 & 295 ft) wire rope. | See page 42-43 |
| IKAR Inertia Reel and Recovery Winch 12, 18 or 24m (39, 59 or 78 ft). | HRA-12TA, HRA-18TA, HRA-24TA |
| BTECH Storage case. | 30207 |

| DAVIT PERMANENT BASES | | |
|--|------------------|-----------|
| Description | Material | Code |
| Core Mount Flush Mount. | Stainless Steel | BFMDB03SS |
| Flush Mount for wet concrete insert mounting. | Hot Dip Gal (MS) | BTS0026F |
| Floor Mount Davit Base c/w Screw locking pin. | Hot Dip Gal (MS) | BTS1109 |
| Floor Mount. | Hot Dip Gal (MS) | BTS0025 |
| Heavy Duty Floor Mount. | Stainless Steel | BFMDB01SS |
| Wall Mount 4 point. | Hot Dip Gal (MS) | BTS0024 |
| Wall Mount 4 point. | Stainless Steel | BFMDB02SS |
| Davit Base Cap. To prevent build up of water and debris. | Stainless Steel | 30069 |



BFMDB03SS



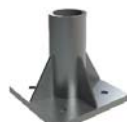
BTS0026F



BTS1109



BTS0025



BFMDB01SS



BTS0024



BFMDB02SS



30069



CONFINED SPACE

PRO-3G Davits

PRO-3G DAVITS



30106

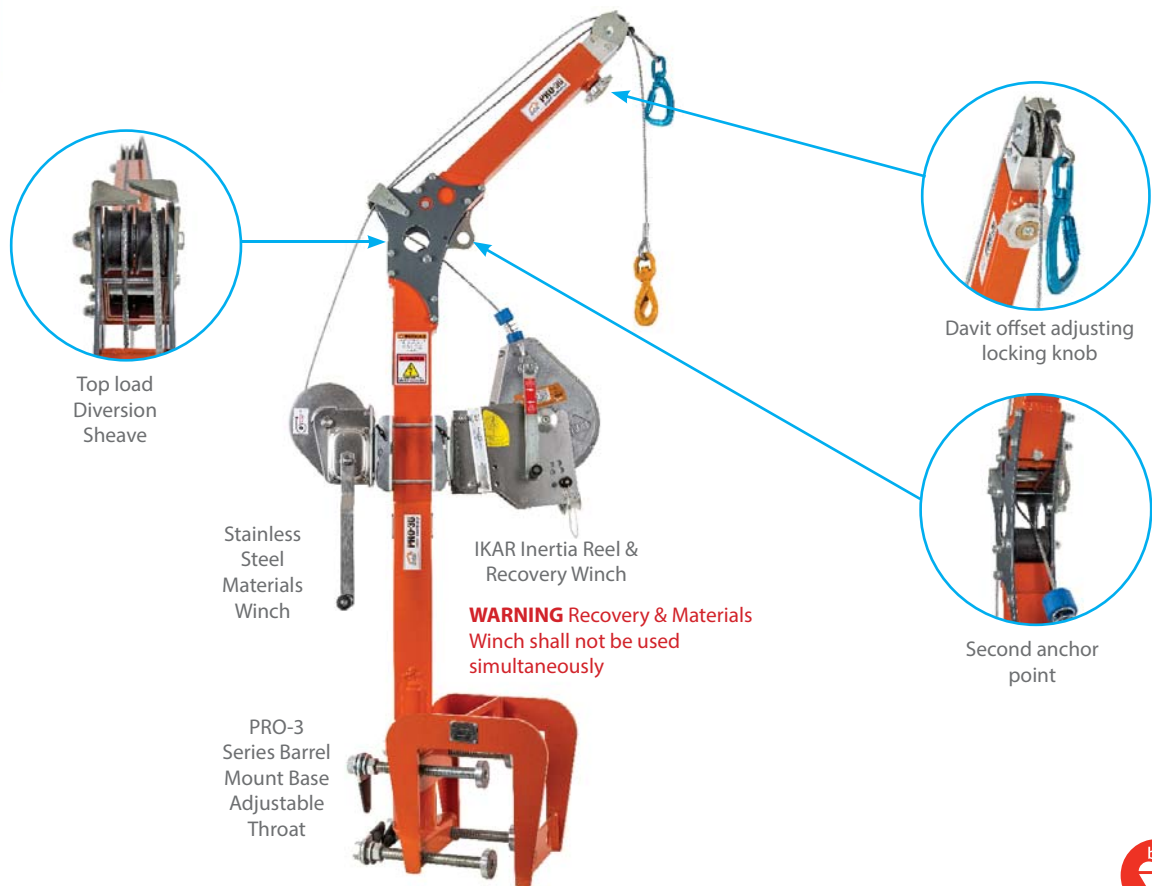
PRODUCT FEATURES

- Lightweight material graded 6061-T6 Aluminium.
- Powder-coated Safety Orange to increase visibility around a workplace .
- Modular in construction with no one component heavier than 10kg (22 lbs).
- Easy to store and can be transported by 1-person.
- Multi-offset mast with a variable reach from 0.5m (1.64 ft) to 0.7m (2.29 ft).
- No special tools required for assembly or disassembly.
- Can be set-up for use with both man-rated and material-rated applications to a max M.R.C. of 140kg (310 lbs) - (Material Rating Only).
- Suits both fixed and portable davit bases with a mast rotation of 360degrees.
- Rated secondary anchor point on vertical mast for connection by the winch operator or stand-by person.
- Quick release winch interface brackets to suit all BTS winches and other reputable winch brands in the market.

Specifications

| | |
|--------------------------------|--|
| Ultimate Strength Rating: | Jib: 12kN (2700 lbs). Mast: 13kN (2923 lbs). |
| Capacity (Rescue): | Max. 2 users, 1 person no more than 140kg (310 lbs) per anchor point.* |
| Capacity (Fall Arrest): | Max. 2 users, 1 person no more than 140kg (310 lbs) per anchor point.* |
| Allowable MAF/AAF for SRL/SRD: | 6kN (1350 lbs). |

* Capacities quoted when used in conjunction with a man rated winch.



Typical Set-up

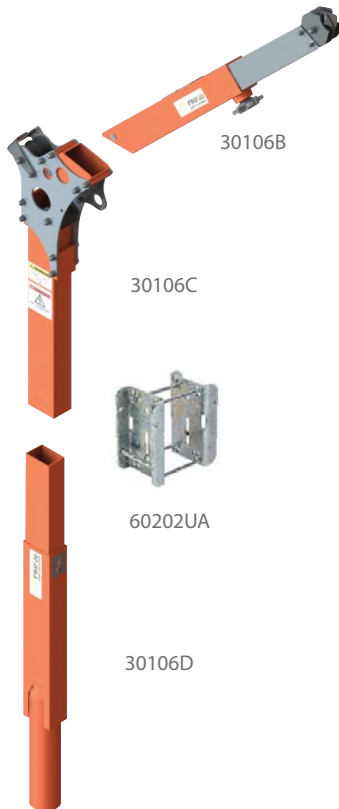




CONFINED SPACE

PRO-3G Davits & Accessories

PRO-3G DAVITS & ACCESSORIES



| PRO-3G DAVITS | | | |
|--|-------------------------|-------------------------|-------|
| Model Description | Reach m (ft) | Height m (ft) | Code |
| PRO-3G Davit - 2.2m (7.21 ft) 3 piece c/w Quick Release Double Sided Universal Male Interface Bracket & 40003B BTECH storage/Carry Bag. | 0.5 - 0.7 (1.64 - 2.29) | 1.9 - 2.2 (6.23 - 7.21) | 30106 |

| PRO-3G DAVITS SPARE PARTS | |
|--|---------|
| Model Description | Code |
| PRO-3G Davit - Section Boom. | 30106B |
| PRO-3G Davit - Section Elbow. | 30106C |
| PRO-3G Davit - Section Mast. | 30106D |
| Quick Release Double Sided Universal Male Interface Bracket. | 60202UA |

| PRO-3G DAVITS ACCESSORIES | |
|--|--------------------------------|
| Model Description | Code |
| Female Single Pro-3G Uni Interface Davit Winch Bracket. | 60202UF |
| IKAR PRO-3G Davit Bracket c/w Female Single Interface Brackets. | 60202UIM |
| BTECH Man / Materials Rated Winch with 18, 30, 45, 60, 76 & 90m (59, 98, 147, 196, 249 & 295 ft) wire rope. | See page 42-43 |
| S/S Man Rated Winch c/w Female Interface Bracket with 18m x 6mm (59' x 1/4") 7x19 H.D.G Grade G1970 Wire rope with Double Action Swivel Safety Hook c/w Fall Arrest Indicator. | SSJC-C820M |
| S/S Material Winch c/w Female Interface Bracket with 18m x 6mm (59' x 1/4") HDG W/R with G80 Swivel S/L HK. | SSJC-C820 |
| S/S Material Winch c/w Female Interface Bracket with 18m x 6mm (59' x 1/4") S/S W/R with G100 Swivel S/L HK. | SSJC-C820S |
| IKAR Recovery Winch 12, 18 or 24 m (39, 59 or 78 ft). | HRA-12TA, HRA-18TA HRA-24TA |
| Aluminium Equipment Storage Box for PRO-3G Davit 30106. | 30206 |
| Aluminium Equipment Storage Box for PRO-3G Davit 30107 & 30108. | 30207 |
| BTECH Storage/Carry Bag. | 40003B |

See pages 26, 27 & 28 for available bases.



SSJC-C820M



60202UF



SSJC-C820



60202UIM



HRA-12TA
HRA-18TA /
HRA-24TA



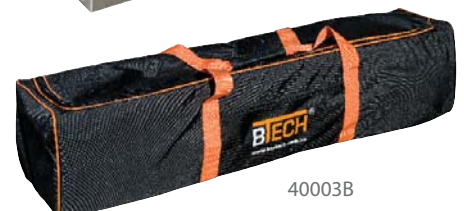
60217



SSJC-C820S



30206 & 30207



40003B



CONFINED SPACE

PRO-4 Davits Accessories

PRO-4 DAVITS



PRO-4 Series Davits are appropriate for applications where a standard height and range davit is unsuitable. Available with a height up to 2.8m (9.8 ft) and an offset reach of 2.0m (6.56 ft). Ideal for use in rescue recovery and as an abseil diversion davit.

PRODUCT FEATURES

- PRO-4 Series Davits also fold up for ease of transport and storage.
- Multi-adjustable reach & offset - 0.9, 1.2, 1.7 & 2.0m (2.95, 3.93, 5.57 & 6.56 ft).
- Rotates full 360 degrees.
- Second anchor point via winch interface bracket.
- Internal overload indicator.
- Custom offset and heights available.
- Compatible with permanent davit bases.

Specifications

| | |
|------------------------------------|---|
| Ultimate Strength Rating: | Jib: 12kN (2700 lbs). Bracket: 15kN (3372 lbs). |
| Capacity: Maximum number of users: | Max. 2 users, 1 person no more than 140kg (310 lbs) per anchor point. |
| Allowable MAF/AAF for SRL/SRD: | 6kN (1,350 lbs). |

50048



HRA-12TA / HRA-18TA / HRA-24TA



60174



60202UIM-SP



60217



30207

| PRO-4 DAVITS | | | |
|--|--------------|---------------|-------|
| Model Description | Reach m (in) | Height m (in) | Code |
| PRO-4 Series Analogue Collapsible Davit. | 2.0 (78.74) | 2.8 (110.24) | 50048 |

| PRO-4 DAVITS ACCESSORIES | |
|--|------------------------------|
| Model Description | Code |
| Winch Interface Bracket c/w Pins & Lanyard for Analogue Davit. | 60174 |
| IKAR Rescue Winch Bracket without Female Single Interface Brackets | 60202UIM-SP |
| BTECH Man / Materials Rated Winch 18, 30, 45, 60, 76 & 90m (59, 98, 147, 196, 249 & 295 ft) wire rope. | See page 42-43 |
| IKAR Inertia Reel & Recovery Winch 12, 18 or 24 m (39, 59 or 78 ft). | HRA-12TA, HRA-18TA, HRA-24TA |
| BTECH Storage case. | 30207 |

| DAVIT PERMANENT BASES | | |
|---|------------------|-----------|
| Description | Material | Code |
| Core Mount Flush Mount. | Stainless Steel | BFMDB03SS |
| Flush Mount for wet concrete insert mounting. | Hot Dip Gal (MS) | BTS0026F |
| Floor Mount Davit Base c/w Screw locking pin. | Hot Dip Gal (MS) | BTS1109 |
| Floor Mount. | Hot Dip Gal (MS) | BTS0025 |
| Heavy Duty Floor Mount. | Stainless Steel | BFMDB01SS |
| Wall Mount 4 point. | Hot Dip Gal (MS) | BTS0024 |
| Wall Mount 4 point. | Stainless Steel | BFMDB02SS |
| Davit Base Cap To prevent build up of water and debris. | Stainless Steel | 30069 |



BFMDB03SS BTS0026F BTS1109 BTS0025 BFMDB01SS BTS0024 BFMDB02SS 30069



CONFINED SPACE

PRO-6G Davits

PRO-6G DAVITS



50506

PRODUCT FEATURES

- Manufactured using 6061-T6 Aluminium.
- Powder-coated with AkzoNobel Interpon D610 advance coating.
- Modular construction of up to 4 pieces allowing for ease of transport and storage.
- Stainless steel CNC machined failsafe device with mechanical fuses.
- 5 Offset adjustment settings from 0.5m (1.64 ft) to 0.75m (2.46 ft) with self locking indexing pin.
- No special tools required for assembly or disassembly.
- Suitable for both man and material lifting/lowering applications.
- Maximum rated capacity 140kg (310 lbs) material handling.
- Primary anchor is Man rated to 140kg (310 lbs) including all tools and clothing.
- Secondary anchor is man rated 140kg (310 lbs) (anchor point for winch operator).
- Suitable for use in both permanent and portable davit bases.
- Swivel 360 degrees.
- Quick connect winch interface bracket.
- Self locking Indexing Pin (Spring Loaded Pin) arrangement allows for quick and easy adjustment and locking of offset at different set intervals.
- No specialist tools required to repair the system after a fall or overload has occurred.
- Use of the in-line 0.6m (1.96 ft) mast extender allows for ease of positioning rescue stretchers over obstacles like guardrails.
- Patent Pending System.

Specifications

| | |
|------------------------------------|--|
| Ultimate Strength Rating: | Jib: 15kN (3372 lbs). Mast: 22.2kN (5000 lbs). |
| Capacity: Maximum number of users: | Max. 2 users, 1 person no more than 140kg (310 lbs) per anchor point.* |
| Allowable MAF/AAF for SRL/SRD: | 6 kN (1,350 lbs). |
| Reach (5 Offset settings): | 0.5m (1.64 ft) to 0.75m (2.46 ft). |
| Height: | Max: 2.79m (9.15 ft) Min: 1.96m (6.43 ft). |

* Capacities quoted when used in conjunction with a man rated winch

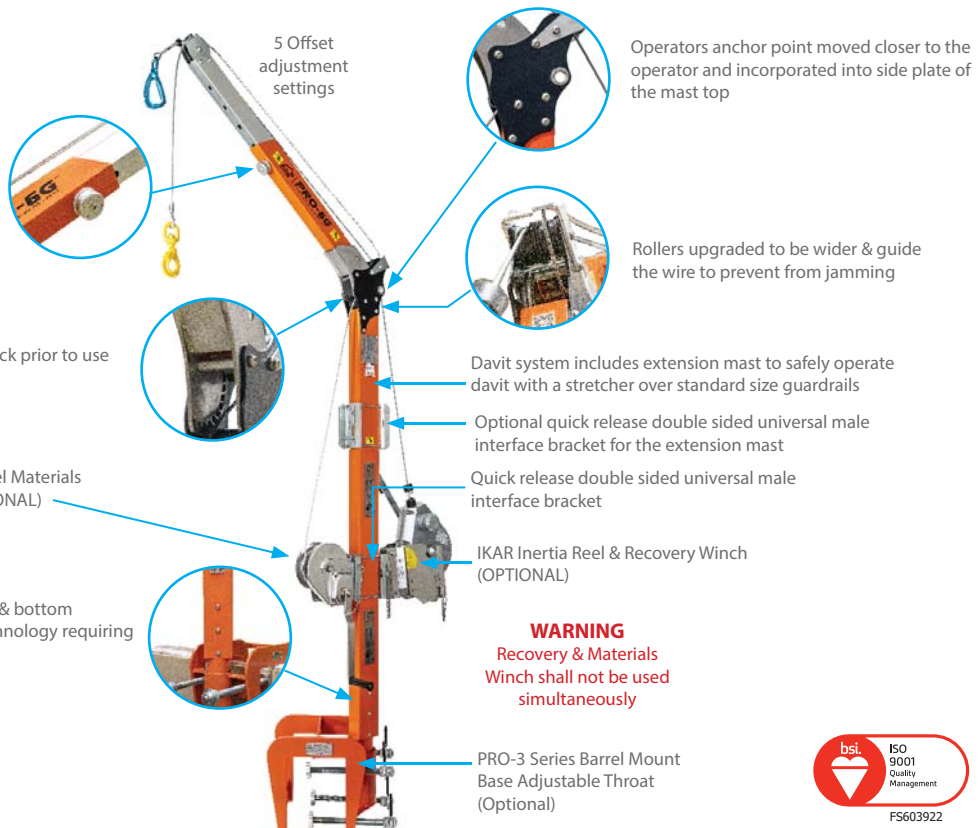
Typical Set-up

Simple Self locking Indexing Pin (Spring Loaded Pin)

Fall/Overload indicator, easy to check prior to use and easy to replace if required

Stainless Steel Materials Winch (OPTIONAL)

Main sections of mast for both top & bottom manufactured using advanced technology requiring no welds





CONFINED SPACE

PRO-6G Davits & Accessories

PRO-6G DAVITS & ACCESSORIES



50506B

50506C



60202UB

50506D

50506E



SSJC-C820M



60202UF



SSJC-C820



60202UIM



SSJC-C820S



60217



HRA-12TA
HRA-18TA /
HRA-24TA



50506BX



40003B

PRO-6G DAVITS

| Model Description | Reach m (ft) | Height m (ft) | Code |
|--|-----------------------------|--|-------|
| PRO-6G Davit - 2.79m 4 piece c/w 1 x Quick Release Double Sided Universal Male Interface Bracket. | 0.5m (1.64) to 0.75m (2.46) | Min: 1.96m (6.43) Max: 2.79m (9.15) | 50506 |

PRO-6G DAVITS SPARE PARTS

| Model Description | Code |
|--|---------|
| PRO-6G Davit - Section Boom. | 50506B |
| PRO-6G Davit - Section Top Mast. | 50506C |
| PRO-6G Davit - Section Mast Extension. | 50506D |
| PRO-6G Davit - Section Bottom Mast. | 50506E |
| Quick Release Double Sided Universal Male Interface Bracket. | 60202UB |

PRO-6G DAVITS ACCESSORIES

| Model Description | Code |
|--|--------------------------------|
| Female Single Uni Interface Davit Winch Bracket. | 60202UF |
| IKAR Rescue Winch Bracket c/w Female Single Interface Brackets. | 60202UIM |
| BTECH Man / Materials Rated Winch with 18, 30, 45, 60, 76 & 90m (59, 98, 147, 196, 249 & 295 ft) wire rope. | See page 42-43 |
| S/S Man Rated Winch c/w Female Interface Bracket with 18m x 6mm (59' x 1/4") 7x19 H.D.G Grade G1970 Wire rope with Double Action Swivel Safety Hook c/w Fall Arrest Indicator. | SSJC-C820M |
| S/S Material Winch c/w Female Interface Bracket with 18m x 6mm (59' x 1/4") HDG W/R with G80 Swivel S/L HK. | SSJC-C820 |
| S/S Material Winch c/w Female Interface Bracket with 18m x 6mm (59' x 1/4") S/S W/R with G100 Swivel S/L HK. | SSJC-C820S |
| IKAR Recovery Winch 12, 18 or 24 m (39, 59 or 78 ft). | HRA-12TA, HRA-18TA HRA-24TA |
| Aluminium Equipment Storage Box for PRO-6G Davit. | 50506BX |
| BTECH Storage/Carry Bag. | 40003B |

See pages 26, 27 & 28 for available bases



CONFINED SPACE

PRO-3G & 6G Davit Bases

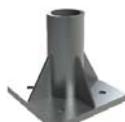
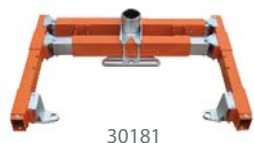
PRO-3G & 6G DAVIT BASES

The PRO-3 Series Portable Bases are for rugged and demanding applications.



| PORTABLE DAVIT BASES | |
|--|--------|
| Description | Code |
| PRO-3G & 6G Portable Base. | 30070 |
| PRO-3G & 6G Portable Heavy Duty Base. | 30115 |
| PRO-3G & 6G Bolt-On Flange Base. | 30181 |
| PRO-3G & 6G External Tank Collar Base.- | 30189 |
| PRO-3G & 6G Plus Hitch mount base. | 30525 |
| PRO-3G & 6G Counterweight base. | 30526 |
| PRO-3G & 6G I-Beam Clamp-On Sleeve 90mm (3.54 in) - 280mm (11.02 in). | 30165 |
| PRO-3G & 6G Barrel Mount Base Adjustable Throat 30mm (1.18 in) - 620mm (24.40 in). | 30029 |
| PRO-3G & 6G Barrel Mount Base Adjustable Throat 20mm (0.78 in) - 205mm (8.07 in). | 30166R |
| PRO-3G & 6G Sheet Piling Mount Base Adjustable Throat (0mm - 25mm). | 30168S |

| DAVIT PERMANENT BASES | | |
|--|------------------|-----------|
| Description | Material | Code |
| Core Mount Flush Mount. | Stainless Steel | BFMDB03SS |
| Flush Mount for wet concrete insert mounting. | Hot Dip Gal (MS) | BTS0026F |
| Floor Mount Davit Base c/w Screw locking pin. | Hot Dip Gal (MS) | BTS1109 |
| Floor Mount. | Hot Dip Gal (MS) | BTS0025 |
| Heavy Duty Floor Mount. | Stainless Steel | BFMDB01SS |
| Wall Mount 4 point. | Hot Dip Gal (MS) | BTS0024 |
| Wall Mount 4 point. | Stainless Steel | BFMDB02SS |
| Davit Base Cap. To prevent build up of water and debris. | Stainless Steel | 30069 |





CONFINED SPACE

Portable Davit Bases

PRO SERIES PORTABLE DAVIT BASES

The PRO-3 Series Portable Bases are for rugged and demanding applications using external weight sources to anchor the davit down. Applicable PRO-3 Series Portable Davit Bases feature the "BTS-Klick" pin-less technology adjustment eliminating the possibility of lost or damaged locking pins.



PRO-3 Series Hitch mount base (30093)

- The PRO-3 Hitch mount davit base allows the user to connect to their vehicle and use its weight and stability as a counter weight.
- Weight 28kg (62 lbs).



PRO-3 Series Plus Hitch mount base (30525)

- Independently adjustable support legs.
- Tow hitch counterweight system.
- Weight 24kg (53 lbs).



PRO-3 Series Counterweight base (30526)

- Independently adjustable support legs.
- External plate counterweight (weights are NOT INCLUDED).
- Extensions are available to position system.
- Trolley counterweight base also available.
- Weight 54kg (119 lbs).

PRO-3 Series portable bases allow for easy set-up and use in multiple locations with no need for permanent installations. All PRO-3 Portable Davit Bases feature the "BTS-Klick" pin-less technology adjustment eliminating the possibility of lost or damaged locking pins.



PRO-3 Portable base (30070)

- Independently adjustable support legs.
- Opening sizes Ø1.35m (4.42 ft) to Ø1.87m (6.13 ft).
- Weight 27kg (60 lbs).



PRO-3 Portable Heavy Duty base (30115)

- Independently adjustable support legs.
- Opening sizes Ø1.45m (4.75 ft) to Ø3.40m (11.15 ft).
- Weight 36kg (79 lbs).



PRO-3 Bolt-On Flange base (30181)

- Independently adjustable support legs.
- Fits Flanges Ø0.32m (1.04 ft) to Ø3.35m (11.00 ft).
- Weight 29kg (64 lbs).



PRO-3 External Tank Collar base (30189)

- Independently adjustable support legs.
- Fits Flanges Ø0.32m (1.04 ft) to Ø3.35m (11.00 ft).
- Grip range 5mm (0.19 in) - 83mm (3.26 in).
- Weight 30kg (66 lbs).

PORTABLE I-BEAM & SHORING MOUNT DAVIT BASES



PRO-3 Series I-Beam Clamp-On sleeve (30165)

- Grip range 90mm (3.54 in)- 280mm (11.00 in).
- Weight 30kg. (66 lbs).



PRO-3 Series Shoring Mount base with adjustable throat (30029)

- Grip range 30mm (1.18 in) - 620mm (24.4 in).
- Weight 34kg. (75 lbs).



PRO-3 Series Shoring Mount base with adjustable throat (30166R)

- Grip range 20mm (0.78 in) - 205mm (8.07 in).
- HD Raptor Coating.
- Weight 25kg (55 lbs).



PRO-3 Series Sheet Piling Mount base with adjustable throat (30168S)

- Grip range 0mm (0 in)- 25mm (1.0 in).
- HD Raptor Coating.
- Weight 18kg (40 lbs).



CONFINED SPACE

Permanent Davit Bases

PERMANENT DAVIT BASES

PRO-Series Permanent davit bases are designed for permanent installations at locations where repeated or frequent use is required. Permanent bases are available in a variety of designs, finishes, and material to meet site specific requirements.

Heavy Duty Floor and Wall Mount Bases are intended typically for custom applications where an increased moment load capacity is required. For example larger offsets or multiple system users. Please contact Beaver Technology Services for help in selecting the best base for your application.



| Description | Material | |
|---|------------------|----------------------|
| | Hot Dip Gal (MS) | Stainless Steel (SS) |
|  <p>Davit Base Cap BTS can provide you with a cap to prevent build up of water and debris</p> | - | 30069 |
|  <p>Core Mount Flush Mount</p> | - | BFMDB03SS |
|  <p>Flush Mount for wet concrete insert mounting</p> | BTS0026F | - |
|  <p>Floor Mount</p> | BTS0025 | - |
|  <p>Floor Mount c/w Screw locking pin.</p> | BTS1109 | - |
|  <p>Heavy Duty Floor Mount</p> | - | BFMDB01SS |
|  <p>Wall Mount 4 point</p> | BTS0024 | - |
|  <p>Wall Mount 4 point</p> | - | BFMDB02SS |

Custom Permanent Bases can be designed to meet site specific application requirements. Contact us with your needs.



CONFINED SPACE

Rescue Stretcher Kit & Temporary Fall Arrest Post

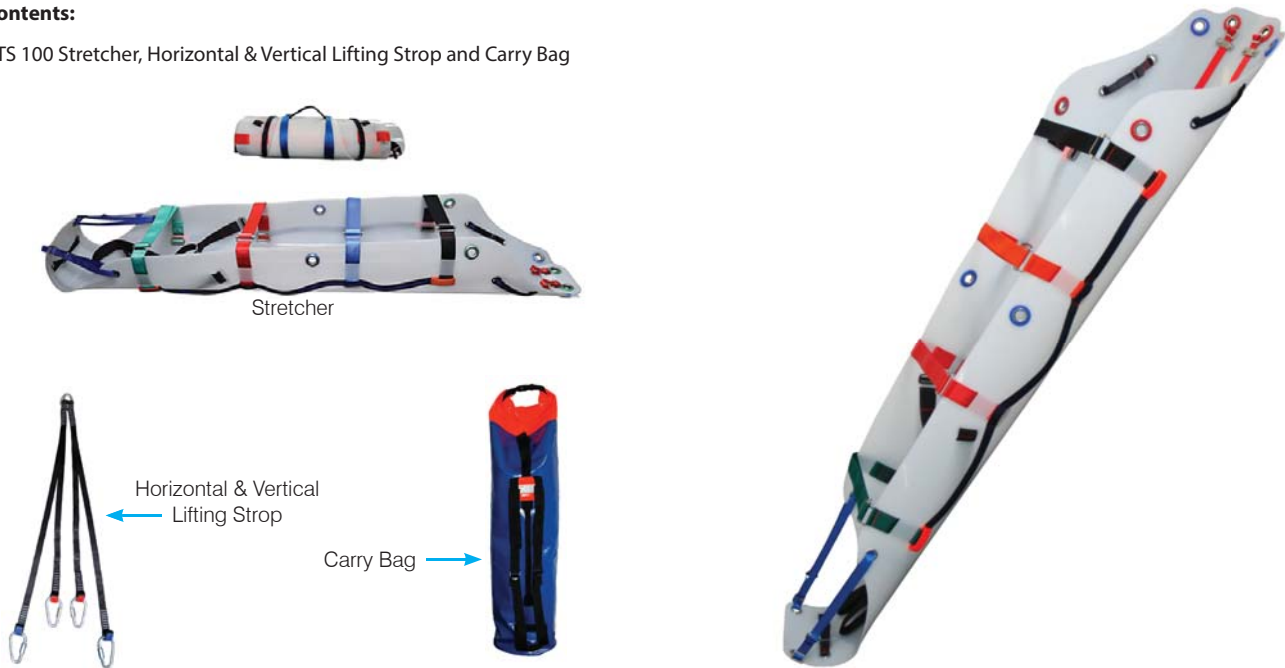
BTS RESCUE STRETCHER KIT

A robust, compact and lightweight stretcher. The flexible material combined with a smooth finish allows for easy sliding and permits the stretcher to be rolled width ways or length ways to facilitate transport. No webbing passes under the stretcher preventing damage whilst dragging. Strong handles around the stretcher allow it to be maneuvered by several rescuers. The stretcher may be hauled vertically or horizontally. The lifting strops secure and allow the stretcher to mould around the casualty.

The BTS Stretcher may be used with a BTS Tripod or Davit for confined space rescue.

Contents:

BTS 100 Stretcher, Horizontal & Vertical Lifting Strop and Carry Bag



| RESCUE 100 KIT | | | | |
|----------------------|------------------------------|--------------|------------------|------------|
| Conformance | Max. recommended user weight | Width | Length | Code |
| CE 93/42/EEC CLASS 1 | 150kg (330 lbs) | 915mm (3 ft) | 2300mm (7.54 ft) | SLIX100KIT |

TEMPORARY FALL ARREST POST

BTS Temporary fall arrest post can be used in conjunction with a permanent davit base to provide a fall arrest anchor for (2) two people or used in multiples as a complete perimeter barricade system.

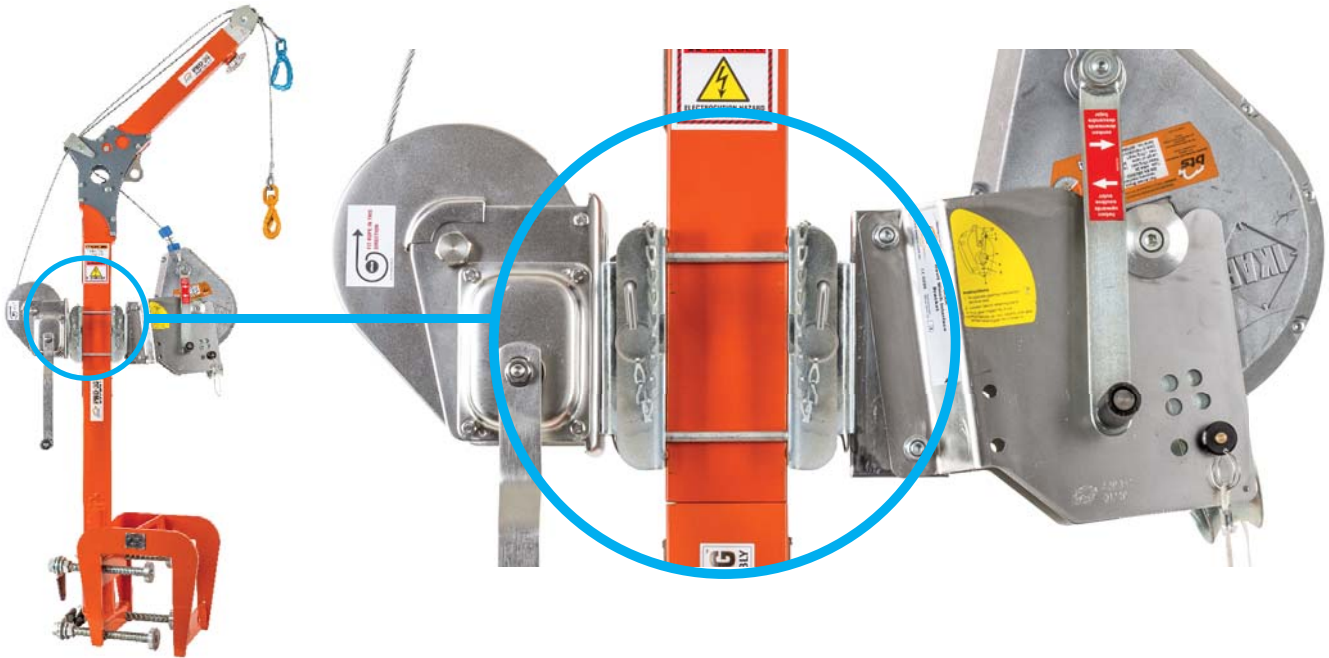
| TEMPORARY FALL ARREST POST | | | |
|----------------------------------|-------------------------|--------------------------|-----------|
| Description | Effective Length m (ft) | Ultimate Strength Rating | Code |
| Removable Anchor Post / Bollard. | 1.1 m (3.60) | 18kN (4046 lbs) | BPOST18KN |



UNIVERSAL INTERFACE BRACKET **BTECH**[®]

Universal Interface Bracket Assembly

UNIVERSAL INTERFACE BRACKET ASSEMBLY



Typical set-up



| QUICK RELEASE UNIVERSAL BRACKET | |
|--|----------|
| Description | Code |
| Quick release double sided universal male interface bracket c/w bolts. Suits Pro-3G Davit. | 60202UA |
| Quick release double sided universal male interface bracket c/w bolts. Suits Pro-6G Davit. | 60202UB |
| Quick release single universal male interface bracket. | 60202UG |
| Female single universal interface davit winch bracket c/w toggle pin & jack chain. | 60202UF |
| Replacement toggle pin & jack chain for 60202UF. | 6028TPS |
| IKAR PRO-Series davit bracket c/w female single interface brackets, toggle pin & jack chain. | 60202UIM |
| Replacement toggle pin & jack chain for IKAR PRO-Series davit bracket 60202UIM. | 5557TPS |

The quick release universal bracket offers a tool free assembly and remove option on davits and tripods and can be adapted to other structures.



60202UA

60202UB

60202UG

60202UF

60202UIM



CONFINED SPACE

Tripod

TRIPOD

The BTS Pro-3 Series 3 stage 3m lightweight aluminium tripod offers workers a practical and user friendly solution for safe means of access & egress including rescue/recovery in vertical confined space applications.



| TRIPOD | | | | |
|-------------------|-----------------------|-------------------------|-----------------|-------|
| Model Description | Maximum Height m (ft) | Collapsed Height m (ft) | Weight kg (lbs) | Code |
| PRO-3, 3m 3 stage | 3.02 (9.90) | 1.55 (5.08) | 19.8 (43.65) | 40014 |

| PRO-SERIES TRIPOD ACCESSORIES | |
|---|--------------------------------|
| Model Description | Code |
| Tripod Storage bag c/w wheels | 30014SCB |
| Quick Release Double Sided Universal Male Interface Bracket. | 60202UAT |
| Female Single Pro-Series Universal Interface Davit Winch Bracket. | 60202UF |
| Tripod Top Pully Assembly. | 30173 |
| IKAR PRO-Series Davit Bracket c/w Female Single Interface Brackets. | 60202UIM |
| Quick Release Male Tripod Bracket (Toolless). | 30014SB |
| BTECH Man / Materials Rated Winch with 18, 30, 45, 60, 76 & 90m (59, 98, 147, 196, 249 & 295 ft) wire rope. | See page 42-43 |
| S/S Material Winch c/w Female Interface Bracket with 18m x 6mm (59' x 1/4") HDG W/R with G80 Swivel S/L Hook. | SSJC-C820 |
| S/S Material Winch c/w Female Interface Bracket with 18m x 6mm (59' x 1/4") S/S W/R with G100 Swivel S/L Hook | SSJC-C820S |
| IKAR Recovery Winch 12, 18 or 24 m (39, 59 or 78 ft). | HRA-12TA, HRA-18TA HRA-24TA |
| Diversion Sheave Block with S/S Karabiner . | 41-Z20 |
| Spreader Bar. | BRO5110 |

PRODUCT FEATURES

- Individually adjustable telescopic legs with toe spikes, bolt/peg holes and chain holes for added stability.
- BTS-Klick dual action quick release buttons for fast and reliable height adjustment.
- Lightweight aluminium construction.
- Tripod head features integrated pulley wheel allowing for winch wire cable to pass through centre of Tripod.
- Additional rated 3 tie-off points in the Tripod head for attaching additional personal fall protection equipment.
- Powder coated in Hi-Vis Safety Orange for ease of identification in all work areas.
- Compatible for use with other reputable height safety manufacturer's winches.
- Tripod comes complete in canvas storage bag with wheels for ease of storage and transport by one person.
- Minimal set up required - Assembled by one person.
- Use of chain optional.

| | |
|-----------------|--|
| Weight: | 19.8 kg (43.65 lbs) |
| Maximum Height: | 3.02 m (9.90 ft) |
| Minimum Height: | 1.55 m (5.08 ft) |
| Capacity: | Max. 2 users, 1 person no more than 140kg (310 lbs) per anchor point |
| Rated: | 12kN (2,700 lbs) per anchor point |





CONFINED SPACE

Tripod Accessories

TRIPOD ACCESSORIES

BTECH® DIVERSION SHEAVE BLOCK

BTECH® anchor point Diversion Sheave Block and Karabiner for attaching a HRA lifeline when a HRA Device is mounted onto an aluminium rescue tripod, or other BTS equipment such as; Davits or AirHooks.

The Diversion Sheave Block is clipped onto the eye at the top of the anchor point with the HRA lifeline passing through it. The pulley is corrosion-resistant stainless steel and comes complete with screwgate karabiner.

Specifications

| | |
|-----------------|--|
| Pulley Type: | Single |
| Pulley Size: | Suits 6-8mm (1/4 - 5/16 in) wire rope. |
| Weight: | 1.1Kg (2.42 lbs) |
| Rated Capacity: | 1 person 140kg (310 lbs) including operator and any equipment. |

| BTECH® DIVERSION SHEAVE BLOCK | |
|-------------------------------|--|
| Code | Description |
| 41-Z20 | Diversion Sheave Block with S/S Karabiner. |



QUICK RELEASE TRIPOD BRACKET

The Universal quick release interface tripod bracket offers a tool free assembly and remove option on tripods when used in conjunction with a female universal interface bracket (60202UF).



| QUICK RELEASE TRIPOD BRACKET | |
|------------------------------|--|
| Code | Description |
| 30014SB | Quick Release Tripod Interface Bracket . |



CONFINED SPACE

Tripod & Beam Assemblies

TRIPOD & BEAM ASSEMBLY

The PRO-Series Tripod and Beam assembly is ideal for work environments where safe entry and egress is required into larger pits and tunnels where traditional Tripods and Davits do not have adequate offset, reach or positioning.

Safe access and egress in larger pits and tunnels up-to 8m (26.24 ft) wide can be achieved using the PRO-Series Tripod and Beam Assembly. Horizontal beams are available in standard 3.5m (11.48 ft) length and custom lengths up to 8m (26.24 ft).

Vertical and horizontal movement is controlled by the 2 winches supplied with the kit. The system is rated for 1 person.



PRODUCT FEATURES

- Individually adjustable telescopic legs with toe spikes, bolt/peg holes and chain holes for added stability.
- BTS-Klick dual action quick release buttons for fast and reliable height adjustment.
- Lightweight aluminium construction.
- Rated tie-off points in the Tripod head for attaching additional personal fall protection equipment.



TRIPOD & BEAM ASSEMBLY

| Code | Description |
|----------|---|
| MRTBS-3M | 2 x 3.0m (9.84 ft) 3-Stage c/w 1 x 3.5m (11.48 ft) Horizontal Beam & Traveller. |

ACCESSORIES / ADDITIONAL COMPONENTS

| Code | Description |
|-------|--|
| 60195 | Power Drive Drill Adaptor for Recovery Rescue Winch 60003. |

Specifications

| | |
|--------------------------|--|
| Maximum Height (tripod): | 3.0m (9.84 ft) |
| Maximum Height (beam): | 2.5 (8.20 ft) |
| Maximum Length Rail: | 3.5m (11.48 ft) Standard. |
| Rated Capacity: | 1 person 140kg (310 lbs) including operator and any equipment. |
| Rail Length: | 3.5m (11.48 ft) length or custom length up to 8m (26.24 ft). |



CONFINED SPACE

Portable rail and guarding system

RAILGUARD 90

The RailGuard 90 system is a portable rail and guarding system that protects people and equipment. The system is designed to allow a person to easily set-up a secure area when necessary, and then quickly pull it down again when it is no longer in use. Made of steel and aluminium, the RailGuard 90 system has been designed to be durable and easy to transport.

RAILS

The RailGuard 90 rails are lightweight aluminium that is telescopic with a spring loaded core. Each rail section has a spring loaded pin at either end which enables secure connection of the rails, and allows for each rail to be quickly removed allowing for entry at any connection point.

POSTS

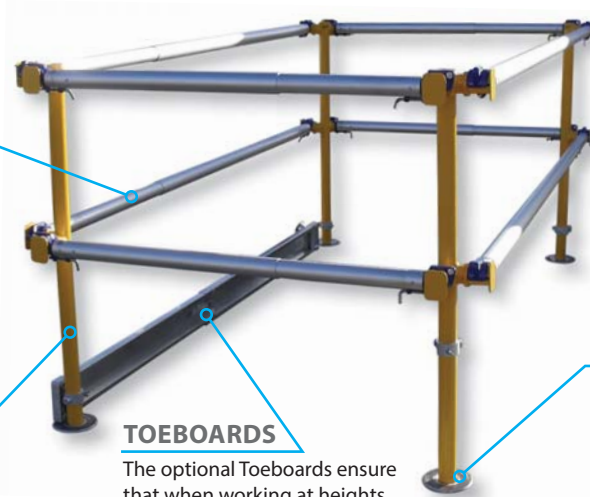
The strong and light weight aluminium poles provide stability for the system, while enabling them to be easily transported from location to location.

TOEBOARDS

The optional Toeboards ensure that when working at heights that any tools or debris that may be accidentally kicked in the work area wont roll over the edge and potentially injure passers by below.

BASE CUPS

The base cups can be fitted either when pouring the slab, or retro-fitted into existing flooring. Once initially set up the cups are left in place with a cap bolted to the top of it to prevent the ingress of water, dirt & other foreign matter, leaving it perfectly safe for pedestrian traffic.



PRODUCT FEATURES



Quickly, and easily set up by a single user to provide protection around equipment, and service areas. The extendible rails enable the one kit to be used in multiple configurations.



Easily gain access to the protected service area at any rail section, by simply unclipping the railing, giving you complete control over access to the service area.



When not in use the RailGuard 90 system is discrete, with the post cup being sealed closed showing only a small aluminium disc on the top surface.



The RailGuard 90 bollards, rails & kick plates pack down conveniently into a durable utility bag for transport and storage to be used on various sites time and time again.

STANDARD PACKAGE

| RAILGUARD 90 | |
|--------------|----------------------------|
| Code | Description |
| BHS-90 | Aluminium Barricade System |



The Standard package consists of;

- One bag containing (4) horizontal long hand rails + (4) horizontal short rails.
- One bag containing (4) toe boards + (4) upright bollards.

EXTENSION SYSTEM

| RAILGUARD 90 | |
|--------------|----------------------------|
| Code | Description |
| BHS-91 | Barricade System Extension |



The Extension system package consists of;

- One bag containing (4) horizontal long hand rails + (2) Upright extension bollard.
- One bag containing (2) toe boards.

| Assembled Kit size | Overall size | | Pole centres | |
|--------------------|--------------------|-------------------|-------------------|-------------------|
| | Length | Width | Length | Width |
| Minimum size | 1933mm (76 in) | 1068mm (42 in) | 1691mm (66 in) | 826mm (32 in) |
| Maximum size | 2643mm (104 in) | 1568 (62 in) | 2221mm (87 in) | 1326mm (52 in) |

Note:

- Outer tube of horizontal long and short hand rails natural aluminium colour.
- Aluminium material specification is 6063.
- The black top plastic cap of the upright bollards are UV treated.

