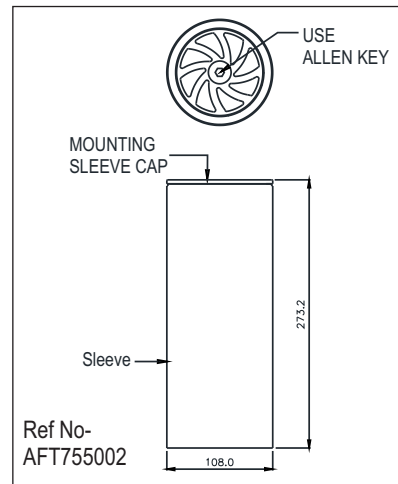
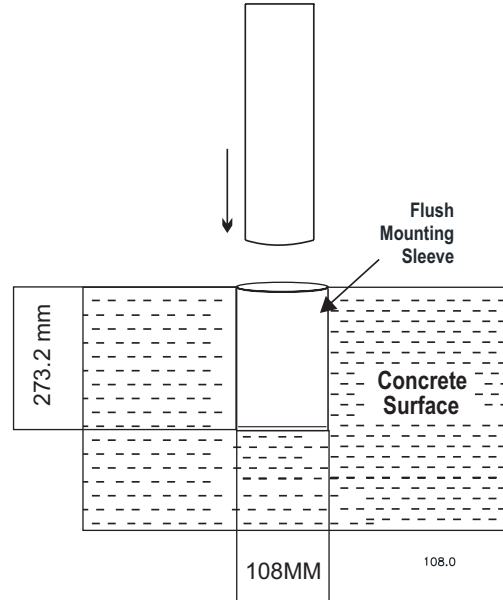


DAVIT FLUSH MOUNT

DAVIT CONCRETE INSERT - 915403

Features

- Concealed davit mount reduces trip hazard when not in use.
- Works with 915400 and 915420 davit systems.
- Capped when not in use to prevent dirt build up.



INSTALLATION:

Davit Flush Mounting sleeve can be installed at time of concrete structure being made & also can be installed in preformed concrete casting. To install the sleeve on preformed surface, make a drill hole of 112 mm dia. up to 274 mm deep. Also ensure to remove all the debris from hole & clean it properly, after that, Use all weather 400 epoxy or equivalent into hole to fix the sleeve.

Installation of mounting sleeve can be done during casting of the concrete by considering below requirements & subject to the condition that concrete should not ingress into the sleeve and sleeve should be properly flushed -

Structure strength- 14000 NM(Min.)

Thickness of concrete & distance from sleeve to edge should be duly checked & approved by a qualified structural engineer.

Installation of sleeve should be perpendicular to the concrete.

Repeat Step 9-14 to install brackets for winch and Rescue Retrieval SRL (Type 3)

Note- When flushed sleeve is not in use, apply socialized cap provided with assembly to prevent it from unwanted water/dust being stuck inside. Make the Allen screw loose with help of 6.0 mm Allen key for the opening of sleeve & when sleeve is not in use, insert the cap into sleeve and tighten the screw with help of 6.0mm allen key. **Base Installation must be approved to local regulations by a qualified engineer.**

NSW Head Office

📍 43 Frank Street
 Wetherill Park, NSW 2164
 ☎ 02 9757 2277

WA Office

📍 42 Mulgool Road
 Malaga, WA 6090
 ☎ 08 9248 6674

QLD Office

📍 7 Durbell Street
 Acacia Ridge, QLD 4110
 ☎ 07 3272 0777

VIC Office

📍 47 Technology Drive
 Sunshine West, VIC 3020
 ☎ 03 9314 5525