

USER MANUAL

CANTILEVER DAVIT SYSTEM

PC. 915400



CERTIFIED PRODUCT



AUSTRALIA & NZ STANDARDS

AS/NZS 5532:2013 (BMP No. 672858)

This equipment is intended for use by
people who have received proper
training and are competent.

1300 100 120

www.austlift.com.au

AUSTRALIAN LIFTING CENTRE PTY LTD

Please read and understand the manufacturer's instructions for each component or part of the complete system. Manufacturer's instructions must be followed for proper use, care, and maintenance of this product. These instructions must be retained and be kept available for the user's reference at all times. Alterations or misuse of this product, or failure to follow instructions, may result in serious injury or death.

Note: The user is advised to keep this user instructions document for the life of the product.

1. INTRODUCTION & APPLICABLE STANDARDS

The Cantilever Davit System (915400) complies with AS/NZS 5532:2013, and is classed as a Personal Protective Equipment (PPE) by the European PPE Regulation (EU) 2016/425 and has been shown to comply with this Directive through the Harmonized European Standard EN 795:2012 TypeB. This product is designed to minimize the risk of/provide protection against the danger of falling from heights. However, always remember that no item of PPE can provide full protection and care must always be taken while carrying out the risk related activity.

2. APPLICATION

The Cantilever Davit System provides a safe and secure system for easy access to confined spaces. It is an ideal choice to provide overhead anchorage which can be mounted on different bases.

3. INSPECTION

Visually inspect the system before each use to ensure that it is in a serviceable condition and is operating correctly. If during inspection, doubts are raised about the safety of the system or a component, these should be replaced either by the manufacturer or a competent person.

4. PRECAUTIONS

- Ensure the Medical condition of the user does not affect his safety in normal and emergency use.
- The equipment shall only be used by a person trained and competent in its safe use.
- A rescue plan shall be in place to deal with any emergencies that could arise during the work.
- Ensure that the anchor is installed directly above the user's head
- It is essential to verify free space required beneath the user at work place before each occasion of use so that in case of a fall there will be no collision with ground or other obstacle in the fall path.

5. PRE-USE CHECK: ENSURE THAT:

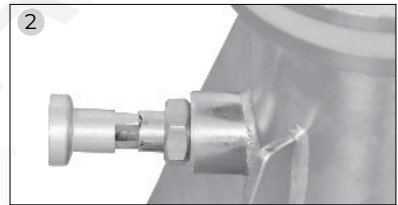
- The user should carry out a pre-use check of the product, to ensure that it is in a serviceable condition and operates correctly before it is used.
- The pre-use check shall involve checking of any wear or abrasion on wire rope and sign of cuts, frays, damage.
- All locking pins are in locked position.
- Davit column and extension arm are not distorted or damaged.
- All bolts and screws are tightened.
- Wall mounting bracket / Floor mounting brackets are properly installed.
- Wire rope of winch / retractable fall arrester is free of cuts, and corrosion.

6. GENERAL INSTRUCTIONS FOR USE OF CANTILEVER DAVIT SYSTEM

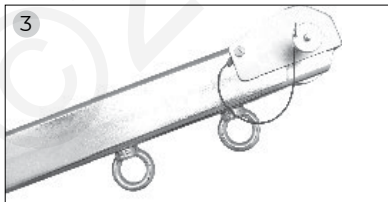
- The product shall be used only for Vertical movement, up or down.
- Suitable for use only for up to a weight of 140kg.
- Ensure that the Harness complies with AS/NZS 1891, is adjusted to the user's size, is free from damage and is in good condition.
- Also ensure that the date on which the equipment must be returned to the manufacturer for yearly inspection is not exceeded.

7. PRODUCT DESCRIPTION

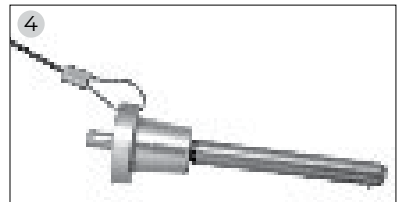
1 Locking pin to adjust the extension arm in 3 Positions.



2 Locking pin for securing column into the floor mounting /wall mounting bracket in desired position.



3 Two additional attachment points which can be used as anchorage point for retractable fall arrester.



4 Big locking pin for securing extension arm on the column.



Personnel and materials winch (915408)



Wall mounting bracket (915402)



Floor mounting bracket (915401)



Inertia reel mounting bracket (915412)



Floor mounting bracket (915401)

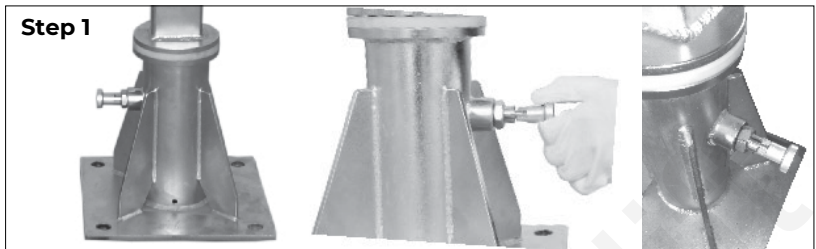


Retrieval Block (915320/915321)

Note: Preparing the apparatus for use requires prior knowledge of proper mounting procedure of the mounting brackets. The bolts or screws required for mounting the floor mounting device, do not come with the product. Please refer to an Engineer to verify the structure is suitable for the installation.

8. INSTALLATION

Step 1: On the mounted floor mounting bracket / wall mounting bracket first pull the inserted Locking pin outwards, turn them 90° and let it go again. That secures them against springing back inwards.

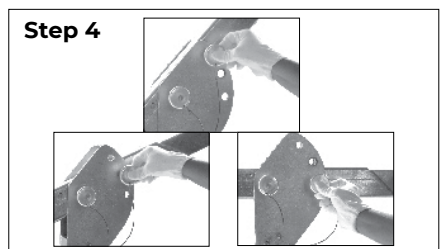
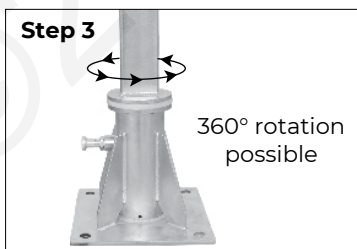


Step 2: Insert the column into the floor mounting bracket. Pull the pin and rotate it at 90°, this brings back the pin to its initial position.



Step 3: At the bottom, round part of the lower arm of the column, there are 8 holes for the stop bolts, which allow the Davit to be locked at intervals of 45°. If unlocked, the Davit is free to rotate at 360°.

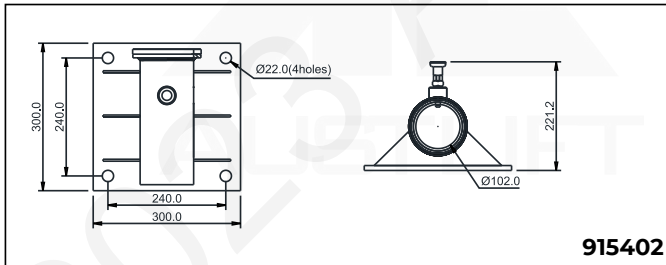
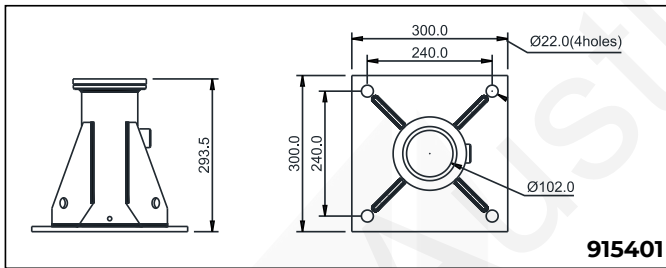
Step 4: Unlock the locking pin by pressing on the pin and pulling it out. Now swing the extension arm of the Davit into desired Position 1, 2 or 3 as preferred and secure it again by pushing the lock pin back in.



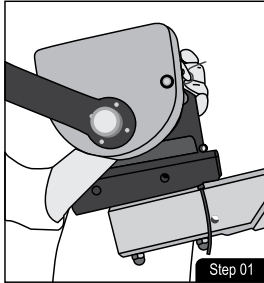
Step 5: The Davit is now ready for its basic function.

Note: The receiving structure must be able to withstand stresses equivalent to 22.1 MPa or 22.1N/mm². The fasteners/structural anchors must be strong enough to handle this strain. They must be stainless steel/High tensile, size M16.

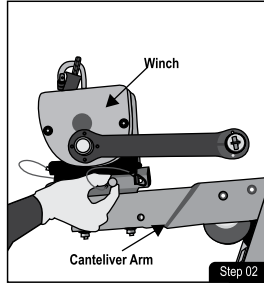
- Thickness of concrete block should be minimum 9”(228.6mm).
- Drill hole should have a minimum clearance of 11”(279.4mm) from all the available edges.
- All receiving structure should be verified by a qualified structural engineer.
- Can be installed on cantilever of concrete beam by sand-witching two plates on beam & concrete structure should be verified by a qualified structural engineer.
- Suitable M16 fasteners should be used for fixing the brackets to the structure.
- For dismantling the Davit, go through the described steps in reverse order.



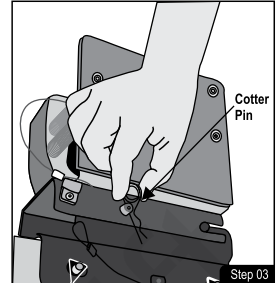
9. INSTALLATION OF WINCH (915408) ON DAVIT (915400)



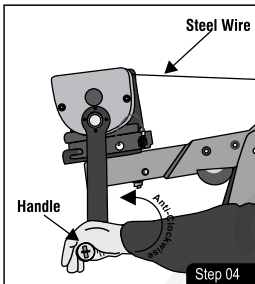
Locate the Davit arm that has pre-installed mounting bracket for installing the winch. Place the winch on the mounting bracket of the Davit arm and insert the guiding pin into the slot.



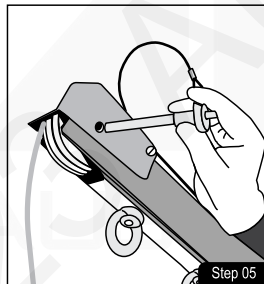
Use solid pin for locking the winch on pre-installed mounting bracket of the Davit arm.



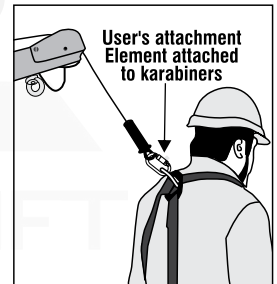
Lock the solid pin on mounting brackets using cotter pin.



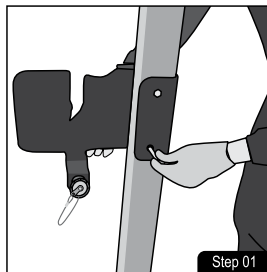
Pull out the handle of the winch outside and rotate it anti-clockwise to release the steel wire. Keep on releasing till you are able to release enough length such that it can pass over the pulleys of the Davit and get suspended vertically downwards.



Pass the wire to the pulley as required and insert the pin back to lock the rope movement. The Davit is now ready to use.

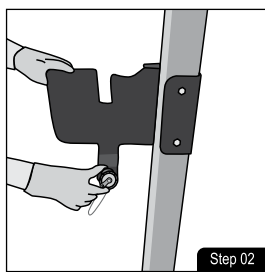


10. INSTALLATION OF RESCUE RETRIEVAL BLOCK (915320/915321) ON DAVIT (915400)



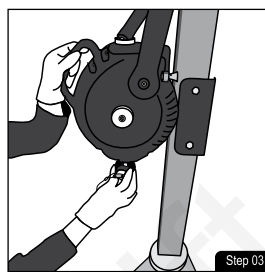
Step 01

Fix the mounting bracket for installing the rescue retrieval block.



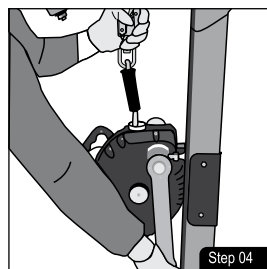
Step 02

Release the knob of the mounting bracket to place the block.



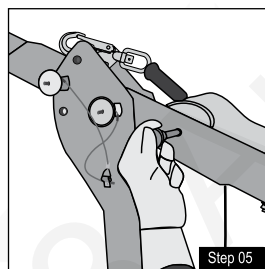
Step 03

Once the block is placed, tighten the knob to fix it.



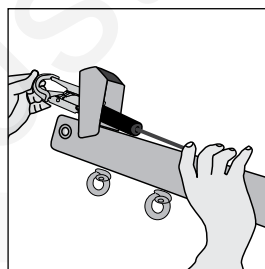
Step 04

Release the webbing of the block to pass it along the Davit's arm.



Step 05

Unlock the pin of the pulley to pass along the hook of the block from the Davit's arm and then insert the pin to lock it. Now the hook is ready to be used as an attachment point.



11. LIMITATIONS

- The apparatus **MUST** only be operated by appropriately trained and skilled persons. Users of this equipment should not suffer from any kind of health impairment. (e.g. alcohol, drug, medication or circulation problems)
- The Retractable Fall Arrester is intended for use at temperatures between - 30 and +50 °C, in accordance with AS 1891.3.
- The permissible load on the fall protection apparatus corresponds to AS/NZS 5532 for securing 1 person of Max.140Kgs.
- No modifications or additions should be made in the system.
- **Following conditions may be hazardous & may affect the performance of the Davit:**
 - Extreme temperature.
 - Trailing or looping of lanyards over sharp edges.
 - Abrasive or sharp edge structures which can damage the equipment.

- Grease, oil, and harmful chemical reagents.
- Direct exposure to rain and moisture.
- Ultra-violet radiation.
- This fall protection apparatus compliant with AS/NZS 5532 is tested for securing maximum 1 person against falling. In conjunction with additionally required AS/NZS 1891.1 compliant safety harnesses, AS 1891.3 compliant retractable fall arrester and EN 1496 compliant winch, it serves for the safety of persons performing work that involves a risk of falling. The fall protection apparatus and Retractable fall arrester must only be used as intended.
- Use karabiner conforming to ANSIZ359.12 for connecting to the anchor points.
- Failure to observe the instructions for use can, present a danger to life. In the event of a fall, hanging in the harness for any longer than 20 minutes must be avoided (risk of suspension trauma orthostatic shock).
- Retractable fall arrester can only protect one person while in use.
- The apparatus should be arranged as close to perpendicular over the head of the person to be secured in order to prevent swinging in the event of a fall.
- If the cable breaks or becomes kinked or roughened, the fall arrester must be sent in to the service workshop for the cable to be replaced.
- It is essential for the safety of the user that if the product is resold outside the original country of destination, the reseller shall provide instruction for use, for maintenance, for periodic examination and for repair in the language of the country in which product is to be used.

12. REPAIR

If the product becomes damaged, it will NOT provide the optimum level of protection, and therefore should be immediately removed from service. It needs to be inspected to see if it is replaced or repaired. Never use the damaged product. Repair is only permitted by the manufacturer or a nominated repair centre or individual approved by the manufacturer.

13. CLEANING

- In case of minor soiling, wipe the equipment with cotton cloth or soft brush. Do not use any abrasive material.
- Store in cool dry place, preferably away from moisture, direct sunlight, extra acidic or basic conditions, and sharp edges.

14. MAINTENANCE

According to the PPE Directive BS8437:2005, the equipment MUST be sent for an overhaul for function and maintenance to Austlift authorised center once in every 12 months.

15. WARNING

- DO NOT ALTER OR MISUSE THE EQUIPMENT. It is prohibited to make any alterations or additions to the equipment without the manufacturer prior written consent, and any repair shall only be carried out in accordance with manufacturers procedures.

- Withdraw from use immediately if there is any doubt about its safe condition or if it has already arrested a fall.
- Use of equipment in unintended applications may result in serious injury or death. Maximum 1 attachment per connection point.

16. CLEANING

- Do not make any alteration or additions to the equipment without the manufacturer's prior written consent and repair shall only be carried out by personnel trained by the manufacture & duly authorized by him.
- The equipment shall not be used outside its limitation, or for any purpose other than that for which it is intended.

17. MARKING

(iii) **AUSTLIFT®**
Cantilever Davit
915400

(iv) UID :
 (v) Date of mfg. :

Adjustable height
 Upper setting : 2.3m
 Middle setting : 1.9m
 Lower setting : 1.5M

Rotation possible **360°**

Load capacity : 200 KGS
 Strength : MIN. 13 KN

WARNING
Please Read Instruction Manual Carefully Before Using the Product

QR CODE

CE 0598
 EN 795:2012 Type B

EX II 2G
 Ex H IIC T6 Gb
 EN 60079-36:2016
 EN 60079-37:2016

AUSTRALIAN LIFTING CENTRE
 43 Frank St. Wetherill Park, NSW 2164, AUSTRALIA
 www.austlift.com.au

AUSTRALIA & NZ STANDARDS
 Certified to AS/NZS 5532:2013
 Issued by BSI
 Vide Lic. No.: BMP/672542

AUSTLIFT®
Floor Mounting Bracket
915401

UID :
 Date of mfg. :

QR CODE

EN 795:2012 Type A

AUSTRALIAN LIFTING CENTRE
 43 Frank St. Wetherill Park, NSW 2164, AUSTRALIA
 www.austlift.com.au

AUSTLIFT®
Wall Mounting Bracket
915402

UID :
 Date of mfg. :

QR CODE

EN 795:2012 Type A

AUSTRALIAN LIFTING CENTRE
 43 Frank St. Wetherill Park, NSW 2164, AUSTRALIA
 www.austlift.com.au

LABEL EXPLANATION:

- (i) The BSI mark showing that the product meets the requirements of Australia/NZ standards
- (ii) The CE mark showing that product meets the requirements of the PPE Regulation (EU) 2016/425.
- (iii) Identification of the manufacturer
- (iv) Product code
- (v) Serial number for traceability of product
- (vi) Month/Year of Manufacture

18. LIFESPAN

The estimated product Lifespan is 10 years from the date of manufacture. The following factors can reduce the Lifespan of the product: intense use, contact with chemical substances, specially aggressive environments, extreme temperature exposure, UV exposure, abrasions, cuts, violent impacts, bad use or maintenance.

Product must be inspected annually by a competent person, they will ensure suitability for further use, inspections need to be recorded / logged.

19. DISCLAIMER

Prior to use, the end user must read and understand the manufacturer's instructions supplied with this product at the time of shipment and seek training from their employer's trained personnel on the proper usage of the product. Manufacturer is not liable or responsible for any loss, damage or injury caused or incurred by any person on grounds of improper usage or installation of this product.

EQUIPMENT RECORD				
Product:				
Model & type/identification		Trade name		Identification number
Manufacturer		Address		Tel, fax, email into use
Year of manufacture		Purchase date		Date first put into use
Other relevant information (e.g. Document number)				
PERIODIC EXAMINATION AND REPAIR HISTORY				
Date	Reason for entry (periodic examination or repair)	Defects noted, repairs carried out and other relevant information	Name and signature of competent user	Periodic examination next due date



AUSTLIFT®

WHOLESALEERS OF LIFTING, RIGGING, LOAD RESTRAINT
& HEIGHT SAFETY PRODUCTS

AUSTRALIAN LIFTING CENTRE

1300 100 120

www.austlift.com.au

Head Office (NSW)



43 Frank Street
Wetherill Park, NSW 2164



Ph : 02 9757 2277

QLD Office



7 Durbell Street
Acacia Ridge, QLD 4110



Ph : 07 3272 0777

WA Office



42 Mulgool Road
Malaga, WA 6090



Ph : 08 9248 6674

VIC Office



475A Dohertys Road
Truganina, VIC 3029



Ph : 03 9314 5525