

# USER MANUAL

## RETRACTABLE FALL ARRESTER WITH RETRIEVAL SYSTEM

PC. 915320, 915321



**Complies with AS 1891.3:2020 Amd 1:2021**

BMP No. 739186

This equipment is intended for use by  
people who have received proper  
training and are competent.

**1300 100 120**

[www.austlift.com.au](http://www.austlift.com.au)

AUSTRALIAN LIFTING CENTRE PTY LTD

**WARNING!! Do not skip this instruction manual. Read the instruction manual carefully before using the equipment. Failure to do so may result in serious Injury or Death.**

**Note:** The user is advised to keep the user manual for the life of the product.

This Retractable Fall Arrester with Retrieval System conforms to AS/NZS 1891.3:2020 Amd 1:2021 retractable retrieval block requirements.

This Retractable Fall Arrester with Retrieval System is designed to minimise the risk of/provide protection against the danger of falling from heights. **However, always remember that no item of PPE can provide full protection and care must always be taken while carrying out the risk related activity.**

## 1. PERFORMANCE AND LIMITATIONS OF USE

The equipment has been tested in accordance with EN 360:2002 and EN 1496:2006 class B has achieved the following performance levels:

EN 360:2002 Test	Result/Comment
Clause 4.1 Design & Ergonomics	Achieves required performance as stated in EN 360:2002 (PASS). Lanyard free from sharp or excessively abrasive surface (PASS). No unnecessary features which add significantly to overall mass (PASS).
Clause 4.2 Materials & Construction	Lanyard end terminated with a loop, for connection to harness and fall arrest system (PASS).  Lanyard meets static strength requirement (PASS).
Clause 4.3.1 Locking after Conditioning (EN 364:1992)	After conditioning, it locks & remains locked until released with 5 kg Max. (PASS)
Clause 4.4 Static Strength(EN 364:1992)	12kN sustained for 3 minutes without release for wire rope block (PASS).
Clause 4.5 Dynamic Performance (EN 364:1992)	Arrest force <6.0kN, Arrest distance <2.0m (PASS).
Clause 4.7 Corrosion Resistance (EN 364:1992)	Corrosion test in accordance with ISO 9227:1990-24 hours (PASS).
EN 1496:2006 Test	Result/Comment
4.2 Ergonomics	Force applied to handle to lift 136Kg is 140N
4.3 Material & constructions	No sharp edges or burrs that could add additional risk to user
4.5 Dynamic Performance & function test for class B	136 Kg mass held, Peak Arrest force : >6.0 kN following Dynamic performance, 204Kg & 30Kg could be raised and lowered on lifting device. On release of handle the arrest distance : 0mm
4.6 Static strength	13.4kN sustained for 3 mins without failure

EN 1496:2006 Test	Result/Comment
4.7 Corrosion Resistance	Corrosion test in accordance with ISO 9227:2012, 48 hours (Pass)

## 2. PERFORMANCE AND LIMITATIONS OF USE

- AUSTLIFT introduces the Retractable Block Retrieval System in Polymer casing which is coupled with hoisting winch to enable easy retrieval of a victim of a fall. The Block allows the fall to arrest and also allows easy hoist of the victim with help of its hoist function.
- The Locking Pin on the side of the casing at the base of the handle allows this dual system to work in independent Fall Arrest & Winch modes.
- It can be easily mounted on the leg of AUSTLIFT Tripod 915410 AUSTLIFT 915400 using specialized brackets.
- Retrieval Type fall Arrest Block 915321 conforms to AS 1891.3:2020 Amd 1:2021 retractable retrieval block requirements.

## 3. PERFORMANCE AND LIMITATIONS OF USE

### 3.1. INSTALLATION

**STEP-1:** Install the appropriate bracket on Tripod /Davit with help of two locking pins supplied with the bracket.

**STEP-2:** Mount 915321 on the bracket by inserting the guided pulley of 915321 into the Recess provided in the bracket.

**STEP-3:** Now insert the locking pin into the bush of the bracket and tight it to the fullest.

**STEP-4:** Reel out the wire and guide it through the pulley of Tripod/Davit and connect to the Dorsal D-Ring of the user's harness.

### 3.2. USAGE

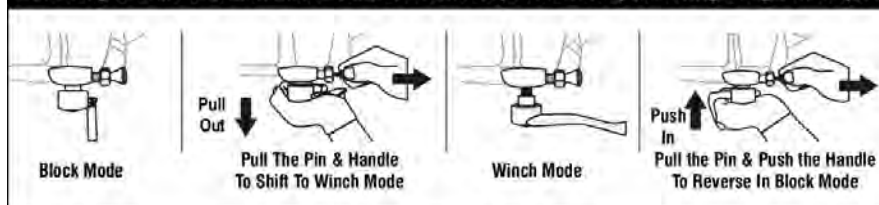
**Retractable Mode:** Pull the Push pin out side and push the handle downside to change the mode of 915321 in Retractable mode.

**Rescue Mode:** After a fall been occurred by the retractable, pull the pin outside and allow the handle to move out to activate the Retrieval function.

**The device comes with an additional hand-operated lowering function intended for lowering a person over a distance limited to 2 meters.**

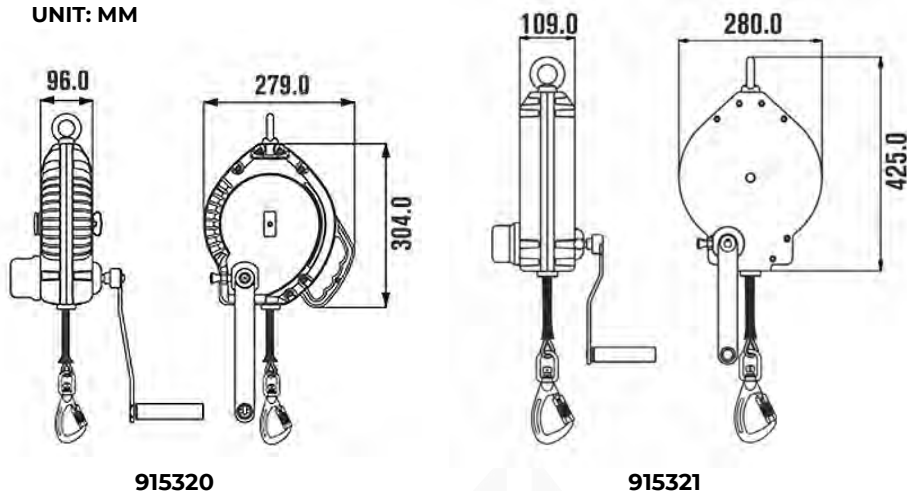
**Note:** Check the Shaft to see if the green band comes out fully. If not, rotate the handle and try to pull upside until the green band is fully visible. The victim can now be raised up and lowered down.

**It is easy to shift to Winch mode from Block mode (& vice versa) following the given steps**



## 4. SPECIFICATIONS

UNIT: MM



## 5. INSTRUCTIONS FOR SAFETY

### • PUTTING INTO SERVICE

- Ensure anchor point to which retractable block is being connected complies to EN795: 2012.
- All connectors use for making connections must comply with EN362:2004 and AS/NZS 5532.

### • USE

- Harness in compliance with Australian or other acceptable international standard is the only recommended body holding device when used with retractable block.
- Attach the life line of to the Dorsal D-ring of the harness.

### • TRAINING

- It is impertinent to get trained by authorized/ competent person for safe instillation adjustment & usage.

## 6. MAINTENANCE

- Cleaning of soil & dirt with cloth. Must be done at a safe area to avoid accumulation of static charge.
- In case of any doubt arising about the safe condition of the product such as crack in the housing or any other metal part, hindered retractions, delayed/ early locking fall indicator showing red mark, in such cases immediately remove from service & send it to authorized repair center.
- Product is safe to use up to maximum temperatures of 50°C.
- Maximum surface temperature of the device is 40°C.
- Any alteration & misuse of the product can lead to serious injury or death.



**7. SPECIFIC CONDITIONS FOR USE**

- Please read the instructions supplied with the product before installing and using the product.
- Cleaning and maintenance shall be conducted in non- hazardous area.
- The product shall only be used by a person trained and a competent in its safe use.
- The product shall not be used outside its limitation for only purpose other than for which it is intended.

**8. WARNING**

- Ensure the medical condition of the user does not affect his safety in normal and emergency use.
- The Retractable Fall Arrester with Retrieval System shall only be used by a person trained and competent in its safe use.
- A rescue plan shall be in place to deal with any emergencies that could arise during the work.
- Do not make any alterations or additions to the Retractable Fall Arrester with Retrieval System without the manufacturer's prior written consent and that any repair shall only be carried out by person trained by the manufacturer & duly authorized by him.
- The Retractable Fall Arrester shall not be used out side its limitation, or for any purpose other than that for which it is intended.
- The lifting / lowering function is for rescue purposes only and not for lifting / lowering loads.

**9. ADVICE & INFORMATION**

- The Retractable Fall Arrester with Retrieval System should be the personnel property of the user.
- Ensure that the Retractable Fall Arrester with Retrieval System is compatible with other items when assembled into a system.
- Usage with other un-compatible items may be dangerous & hazardous as the safe function of one item may be affected or interferes with the safe function of another.
- The user should carry out a pre-use check of the Retractable Fall Arrester with Retrieval system, to ensure that it is in a serviceable condition and operates correctly before it is used.
- The pre use check shall involve checking of any wear or abrasion on wire ropes and sign of corrosion if any on metal parts or any breakage of the plastic/ aluminium casing.
- Withdraw from use immediately if there is any doubt about its safe condition or if it has already arrested a fall, the equipment shall not be used again until confirmed in writing by a competent person that it is acceptable to do so.
- Ensure that the strength of the anchor device is greater than 12KN.
- Use karabiner conforming to EN 362 with 6kN gate strength or ANSI for connecting to the anchor points.

- It is advisable to use the dorsal attachment D-Ring of the harness for connection to the Retractable Fall Arrester with Retrieval System. However if it is not possible for any reason, the chest attachment element may also be used.
- It is essential to ensure that you have enough free space below the user's feet and the ground, so that in the event of a fall there will be no impact with the ground. Avoid the possibility of a swing fall which could allow for collision into other obstacles.
- The enclosure of the fall arrest block is made of Polyamide, cleaning and maintenance shall only be conducted in a safe area.
- Following conditions may be hazardous & may affect the performance of Retractable Fall Arrester with Retrieval System:
  1. Extreme temperatures
  2. Trailing or looping of Lanyards over sharp edges.
  3. Extreme acidic or basic environments.
  4. Abrasive or sharp edge structures which can damage the equipment.
  5. Pendulum falls.
- Ensure that manufacturer's packing is used during transportation to prevent damage. In case original packing is not available, use polybag which is sealed to prevent moisture.
- It is essential for the safety of the user that if the product is resold outside the original country of destination, the reseller shall provide instruction for use, for maintenance, for periodic examination and for repair in the language of the country in which product is to be used.
- There should be direct or indirect visual contact or some other means of communication of the victim with the rescuer at all times during the rescue process.
- It is advised that annual inspection should be done by competent person & if found any discrepancy in product service will be done at authorized service center only.

## 10. INSTRUCTION FOR MAINTENANCE

- Follow the maintenance instructions procedure laid below strictly.
- In case of minor soiling, wipe the equipment with cotton cloth or soft brush. Do not use any abrasive material. For intensive cleaning wash in water at a temperature between 25°C to 50°C using a neutral detergent. It should be allowed to dry by itself and be kept away from open fire or any other source of heat. Avoid direct sunlight.
- Store in cool dry place, preferably away from moisture, direct sunlight, extra acidic or basic conditions, sharp edges.

## 11. SERVICE INTERVALS

- Every year by a competent person (Annually).
- Every two years to be serviced by authorised service agent and the break pad replaced.
- **Note:** If any issues are found in the annual inspection by a competent person, the unit must be sent to an authorised service agent for repairs with Austlift parts.

**11. MARKING ON PRODUCT**

PRODUCT REF. NO.	: 915321 (iv)
ROPE LENGTH	: 30 MS (v)
UNIQUE SERIAL NO.	: XXXXXXXXXXXX (vi)
MONTH & YR OF MFR.	: XX/YYYY (vii)

**EXPLANATION**

Retractable Fall Arrester is marked with :

- (i) The 'CE' mark showing that the product meets the requirements of the PPE Regulation (EU)2016/425
- (ii) Identification of the manufacturer
- (iii) Product Name
- (iv) Product Ref. No.
- (v) Wire Rope Length
- (vi) Unique Serial No.(USN):XXXXXXXXXX
- (vii) Month & Year of Manufacture

1. Keep away from sunlight or heavy rains.
2. Ensure that the anchorage point has strength of min 12kN.
3. Ensure that the max angle between the vertical & the lanyard is 40°.
4. Ensure that wire rope/webbing has no cuts or abrasion marks before use.
5. Once the wire rope/Webbing has been reeled out, do not leave it suddenly to retract inside on its own, let it go inside gradually by guiding it slowly inside.
6. Access confined space with Systems having min. Strength of 12kN.
7. Connect the lanyard to the suitable fall arrest anchor point.
8. To be used by person not weighing more than 140 kgs.
9. Do not attempt repair unless trained by the manufacturer.
10. Use between temperature range of -30°C to + 50°C.

**Label**

**WARRANTY**

All AUSTLIFT products bear 1-year warranty against manufacturing defects , applicable on Unused AUSTLIFT products , from the date of purchase. However, AUSTLIFT shall not be liable for any accident or damage while the product is in use.

**LIFESPAN**

The estimated product lifespan of this product is 10 years from the date of issue. If no issue date has been recorded on the unit, the manufacture date must be used to determine withdrawal date. The following factors can reduce the lifespan of the product: intense use, contact with chemical substances, specially aggressive environment, extreme temperature exposure, UV exposure, abrasion, cuts, violent impacts, bad use or maintenance.

**DISCLAIMER**

This information on the product is based upon technical data that AUSTLIFT obtained under laboratory conditions and believes to be reliable. AUSTLIFT does not guarantee results and takes no liability or obligation in connection with this information. As conditions of end use are beyond our control it is the user's responsibility to determine the hazard levels and the use of proper personal protective equipment. Persons having technical expertise should undertake evaluation under their own specific end-use conditions, at their own discretion and risk. Please ensure that this information is only to check that the product selected is suitable for the intended use. Any product that is damaged, torn, worn or punctured should be immediately discontinued from usage .

AUSTLIFT

<b>EQUIPMENT RECORD</b>		
Product:		
Model & type/identification	Trade name	Identification number
Manufacturer	Address	Tel, fax, email into use
Year of manufacture	Purchase date	Date first put into use

Other relevant information (e.g. Document number)

<b>PERIODIC EXAMINATION AND REPAIR HISTORY</b>				
Date	Reason for entry (periodic examination or repair)	Defects noted, repairs carried out and other relevant information	Name and signature of competent user	Periodic examination next due date



# AUSTLIFT®

WHOLESALEERS OF LIFTING, RIGGING, LOAD RESTRAINT  
& HEIGHT SAFETY PRODUCTS

## AUSTRALIAN LIFTING CENTRE

# 1300 100 120

[www.austlift.com.au](http://www.austlift.com.au)

### QLD Office



7 Durbell Street  
Acacia Ridge, QLD 4110



Ph : 07 3272 0777

### WA Office



42 Mulgool Road  
Malaga, WA 6090



Ph : 08 9248 6674

### VIC Office



475A Dohertys Road  
Truganina, VIC 3029



Ph : 03 9314 5525

### Head Office (NSW)



43 Frank Street  
Wetherill Park, NSW 2164



Ph : 02 9757 2277