

DOOR/WINDOW JAMB ANCHOR

UNIQUE DOOR/WINDOW JAMB ANCHOR INSTALLS IN SECONDS



LIGHTWEIGHT, PORTABLE & SAFE

Designed to install between the vertical sides of a door or window frame to provide a non-penetrating anchor point.



THE ULTIMATE IN FALL PROTECTION

PRODUCT SHEET

FAST, SIMPLE & SAFE TIE-OFF POINT FOR YOUR FALL ARREST SYSTEM

The Door/Window Jamb Anchor allows the user the ability to install a fall protection rated anchorage connector without the need to penetrate into anything.

DOOR/WINDOW JAMB ANCHOR

DBI-SALA's Door/Window Jamb Anchor is designed to install without compromising the structure in any way. There is no drilling or welding required, you simply compress the device at floor level between the vertical sides of a minimum 15kN rated door or window frame and tighten.

The anchor installs quickly and efficiently to provide a fast, simple and safe tie-off point in three easy steps:

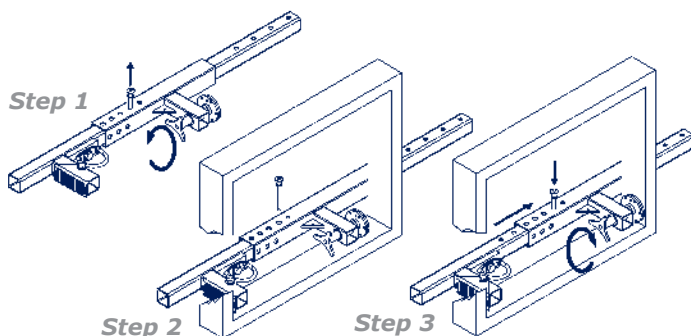
- 1) remove the locking pin,
- 2) adjust the anchor to fit inside the desired opening,
- 3) use the built-in "coarse adjustment knob" to tighten and lock the device into place.

Complete installation takes only seconds, and you have a safe, fall arrest rated anchor point to attach your shock absorbing lanyard or self retracting lifeline.

This extremely portable and lightweight anchor weighs only 6.35kg. For complete job site flexibility, it can be easily moved from one location to another, installed, removed and stored. The portability and ease-of-use increases worker productivity and satisfaction. Typical applications for this anchor include residential and commercial construction, roof tops with door entrances, elevator shafts, wall openings, emergency egress, rescue and more.

Installation Steps

Complete installation takes only seconds, and you have a safe, fall arrest rated anchor point.



Door/Window Jamb Anchor Model:

2100080 | Door/Window Jamb Anchor, adjustable for openings ranging from 546mm to 1308mm

FEATURES

- Fits door or window sizes ranging from 546mm to 1308mm in width for complete job site flexibility.
- Non-penetrating design ensures no damage to structure.
- The anchor is simply compressed between the vertical sides of the door or window frame.
- Fast and easy installation with built-in adjustment knob - no tools or drilling are required.
- Lightweight and extremely portable design weighs only 6.35kg. for easy transport, storage and use.
- Meets or exceeds all applicable industry standards.

Specifications:

Anchor: Aluminium and zinc plated steel. **D-Ring:** Carbon steel with zinc plated finish. **Size:** 1431.5mm long x 180.8mm wide x 57.2mm thick. **Weight:** 6.35kg. **Capacity:** One user, 140Kg. **Strength:** 16kN. **Compatibility:** DBI-SALA anchors are designed for use with DBI-SALA approved components and systems or as recommended by a competent person. **Standards:** Meets AS/NZS 1891.4 requirements for fall arrest rated anchorages. **Country of Origin:** U.S.A. **Special Instructions/Conditions of Use:** Reading user instruction manual prior to use is essential. Annual inspection and re-certification is required as per AS/NZS 1891.4.



Capital Safety - Australia & New Zealand
Australia: 1800 245 002 | New Zealand: 0800 212 505
www.capitalsafety.com.au
sales@capitalsafety.com.au

