



INTEBUILD

CASE STUDY

THE PROJECT IN DETAIL

Height Dynamics refurbished Intebuild's plant areas as part of a complete roof replacement project, installing a walkway, platforms and handrails to improve height safety in the maintenance work space.

In doing so, we applied the hierarchy of hazard control — a widely accepted industry system that's used to minimise or eliminate exposure to hazards.

THE HAZARD CONTROLS IN THE HIERARCHY ARE, IN ORDER OF DECREASING EFFECTIVENESS:

- Elimination
- Substitution
- Engineering controls
- Administrative controls
- Personal protective equipment

In this case we were able to apply the highest level of control to maintenance areas, installation of walkway, platforms to create safe access to mechanical services and eliminate the risk of slips, trips and falls.

As well as reducing the likelihood of accident or injury it prevents the chance of damage to roof during maintenance.

CUSTOMER NAME

Intebuild

LOCATION

342 Wickham St

SCOPE OF WORKS

Scope, design and install systems to ensure safe access to all rooftop plant areas

WHAT VALUE WAS ADDED FOR THE CUSTOMER

Risk of slips, trips and falls during rooftop maintenance has been eliminated while raised walkways also prevent roof damage.

OUTCOMES

Staff and contractors now have safe, user-friendly access to all work areas, reducing the likelihood of accident or injury occurring.

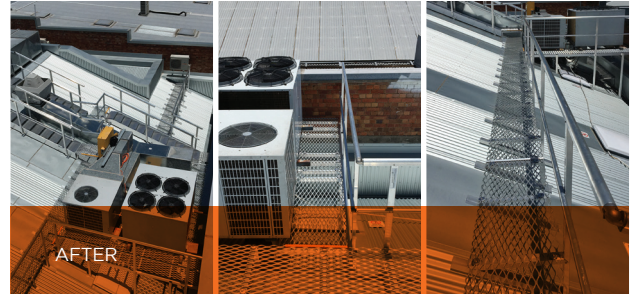


IN-SITU: BEFORE AND AFTER



BEFORE

Roof access to the air conditioning units. Anyone accessing these units would have difficulty moving about due to the roof slope and could slip, damaging the roof, or injuring themselves.



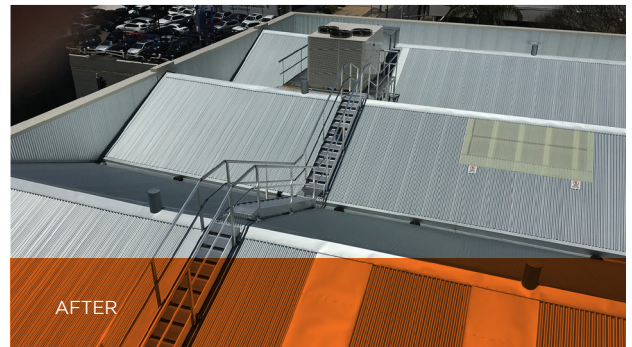
AFTER

Raised work platform eliminates all hazards. There is now safe access to the motors and other areas that require regular maintenance. The walkway non-slip.



BEFORE

Aircon unit lacks any platforms and roof access goes past skylights that are considered a fragile surface and which pose a fall risk. It is likely that repeated maintenance trips will result in roof damage.



AFTER

A walkway and raised platform eliminates the fall risks and provides safe access to the aircon unit.



BEFORE

Cooling tower area lacks a compliant walkway for access.



AFTER

Raised walkway provides safe maintenance access and an even working platform across the entire cooling tower area.